

EDEN GOLD-SILVER PROJECT DURANGO / SINALOA, MEXICO



Developing High Grade Gold and Silver Projects in Mexico



Disclaimer

The information contained herein, while obtained from sources which we believe are reliable, is not guaranteed as to its accuracy or completeness. The company is an exploration stage mineral resource exploration company and none of its mineral projects have yet to be proven to be economic. The contents of this presentation is for information purposes only and does not constitute an offer to sell or a solicitation to purchase any securities referred to herein.

Forward-looking Statements

This presentation includes certain forward-looking statements about future events and/or financial results which are forward-looking in nature and subject to risks and uncertainties. Forward-looking statements include without limitation, statements regarding the company's plans, goals or objectives and future exploration, development, potential mineralization, exploration results and future plans and objectives of Centenario. Forward-looking statements can generally be identified by the use of forward-looking terminology such as "may", "will", "expect", "intend", "estimate", "anticipate", "believe", or "continue" or the negative thereof or variations thereon or similar terminology. There can be no assurance that such statements will prove to be accurate and actual results and future events could differ materially from those anticipated in such statements. Important factors that could cause actual results to differ materially from expectations include risks associated with mining generally and exploration stage projects in particular. Potential investors should conduct their own investigations as to the suitability of investing in securities of Centenario.



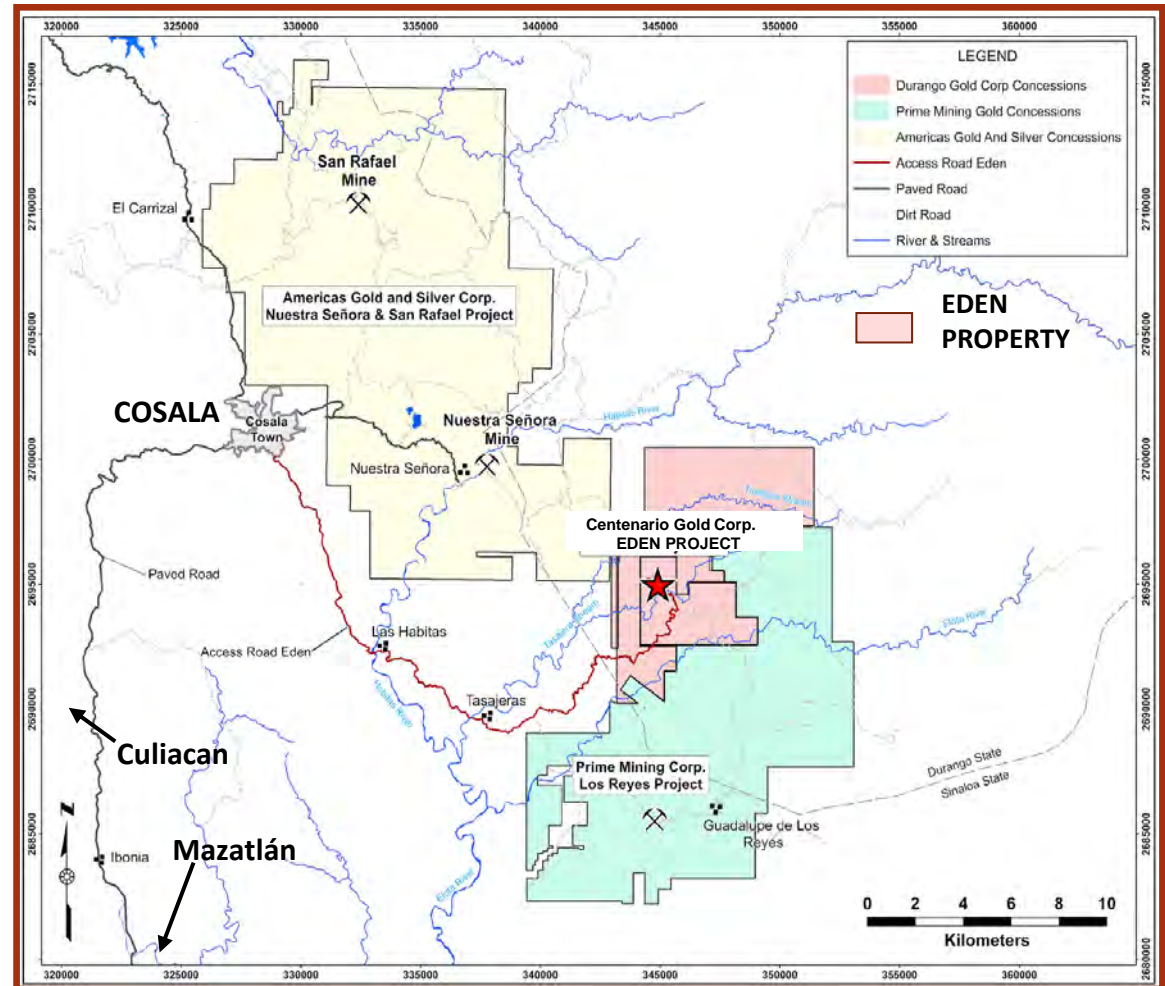
EL EDEN Project Access & Location



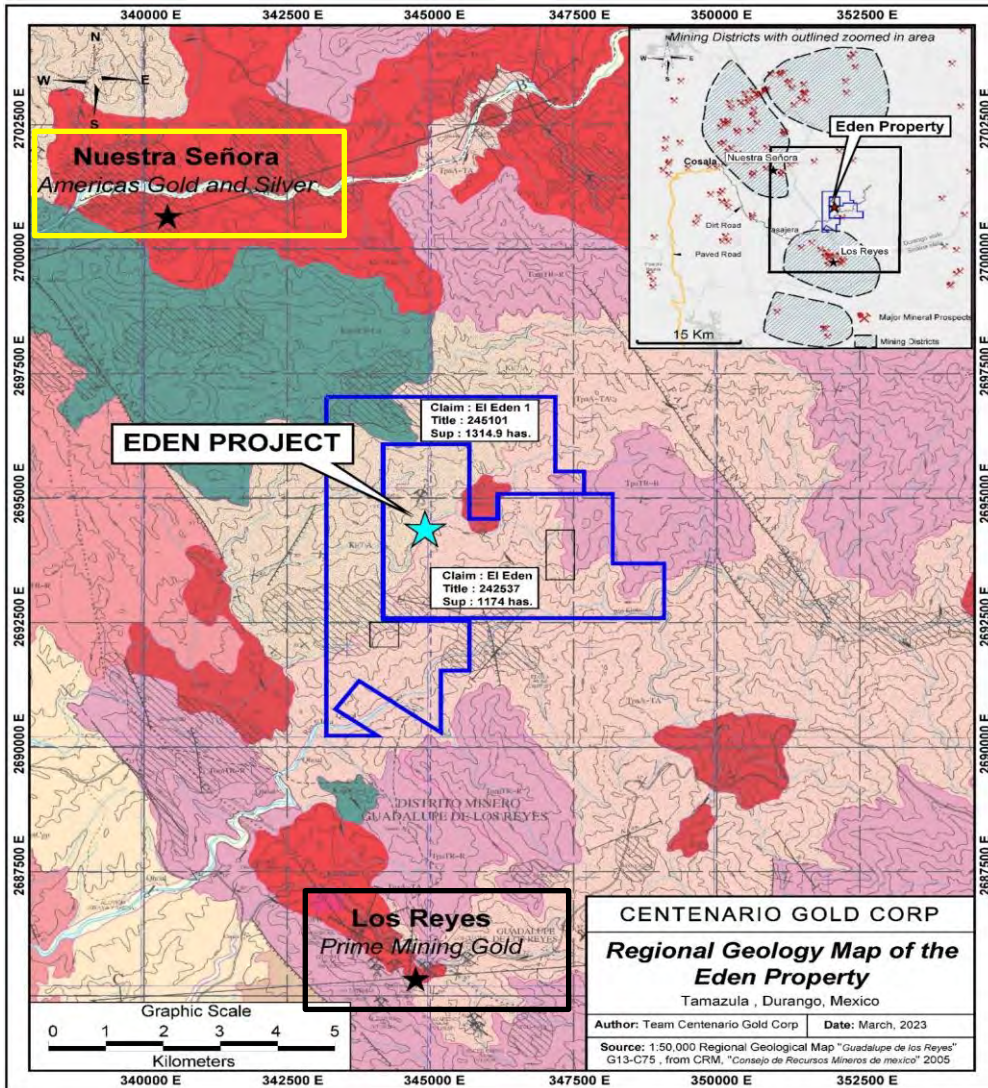
The Eden Property sits between **Prime Mining Corp's 'Los Reyes'** project to the southeast and **Americas Gold & Silver's 'Nuestra Señora/San Rafael'** operating mine to the northwest, both part of the regional NW-trending mineralized corridor.



Both Prime's and Centenario's Properties are located within 50 km E-SE of the old mining town of Cosala, the center of two historical mining districts. Access to Cosala is along 150 km of paved roads coming from Culiacan to the NW or Mazatlán to the South.



EL EDEN Mineral Concessions & Regional Geology



MINERAL PROPERTIES

- Centenario Gold Corp.
- Prime Mining Corp.
- Americas Gold & Silver

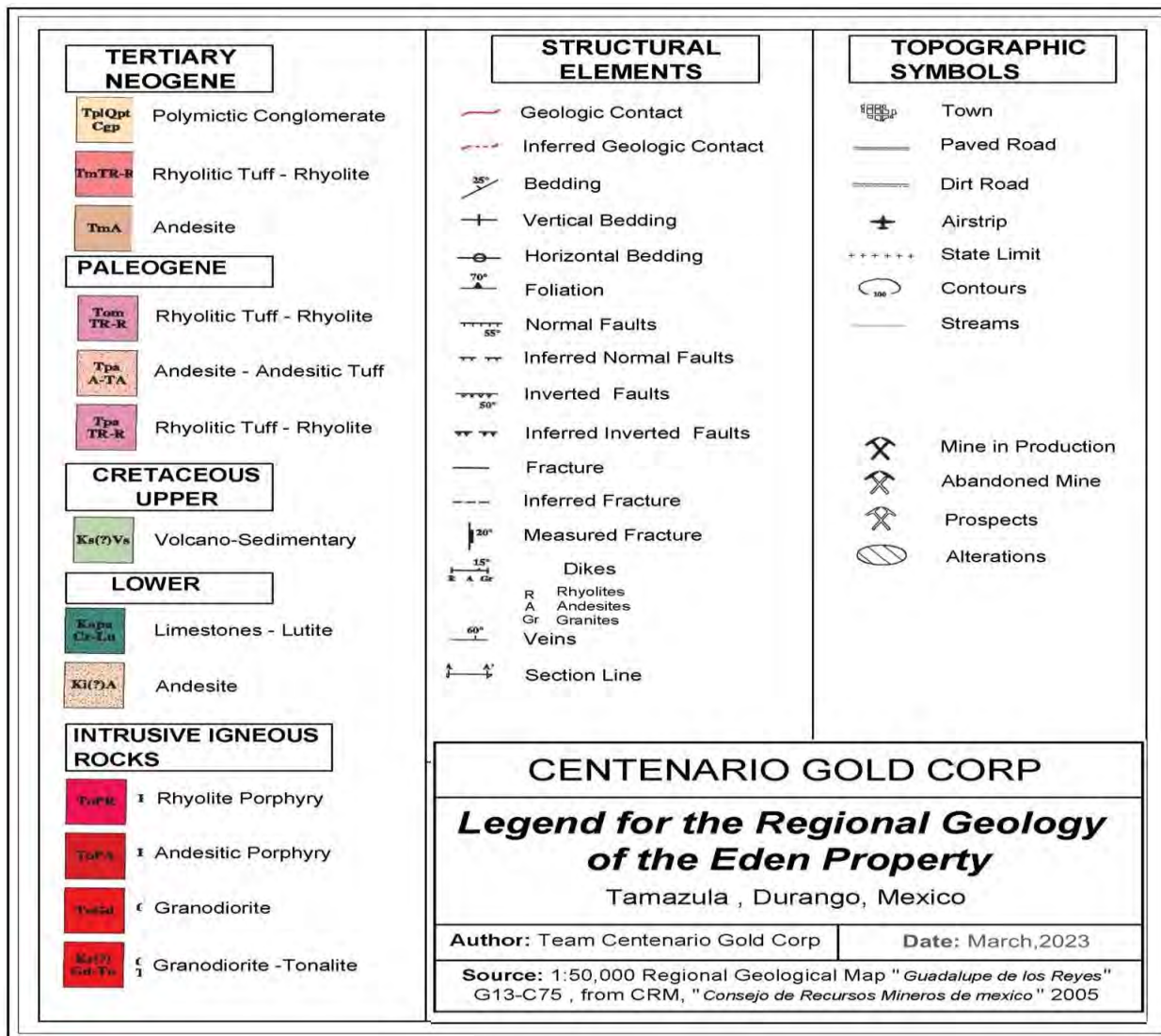
REGIONAL GEOLOGY

Geology at the El Eden Project is very similar to that at Los Reyes Deposit. Both Projects sit in the andesitic rocks of the Sierra Madre Occidental's Lower Volcanic Sequence. Both Projects have a granodiorite body in the vicinity of the known mineralization (the motor-generator of epithermal system). The regional structural setting consist of a NW-trending system of faults and cross-cutting N-S and NE-SW trending secondary faults.

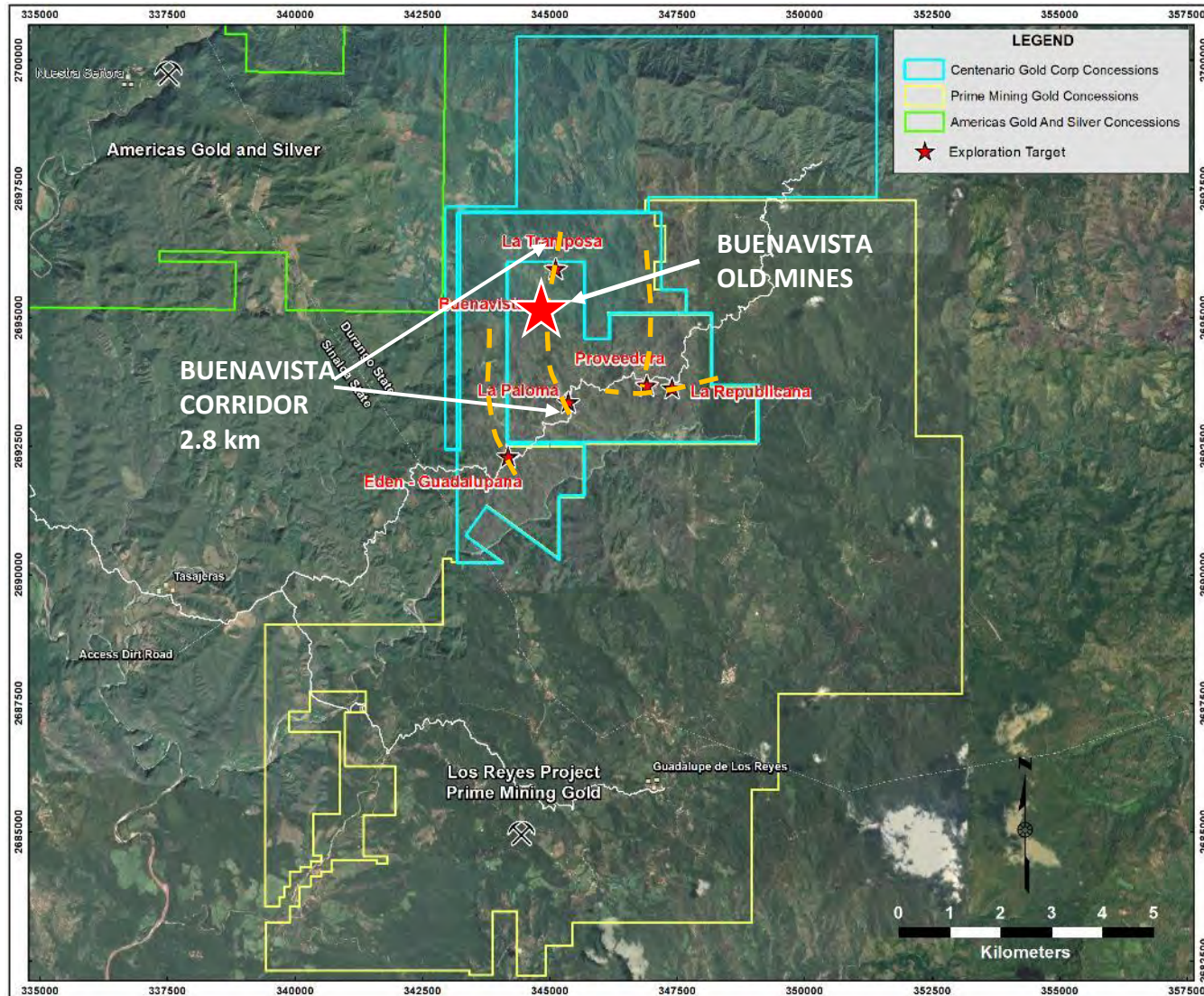
NAME	TITLE NO.	SIZE (Has)
EL EDEN	242537	1174.0
EL EDEN 1	245101	1314.9
EL EDEN 2*	Exp. 95/15245	2430.2

*Title pending

EL EDEN Regional Geology Legend



EL EDEN Property Mineral Prospects



MAJOR KNOWN PROSPECTS

1. Buenavista
2. La Paloma
3. Guadalupana
4. La Provedora
5. La Republicana

Each of these mineral prospects are centered on an area of old, artisanal mining where VG is commonly found, this is similar to what is found on the Los Reyes Deposit.

The Gold and Silver mineralization is hosted in fault-controlled, quartz vein-breccia-stockwork systems.

Mineralized Structures

EL EDEN Rock Sample Au & Ag Results @ Buenavista



Lithology

Andesites	Basaltic Andesites	Dacitic Dike
Dacitic Lithic Tuffs	Lower Andesites	

Legend

Mineralized Quartz Veins and Breccias	Old Mine Adit
Inferred Extensions of the Mineralized Veins and Breccias	Slope
Faults	Dirt Road
Fractures	Contours 10 m
Stockwork	

Samples

Surface Samples	
Underground Samples	

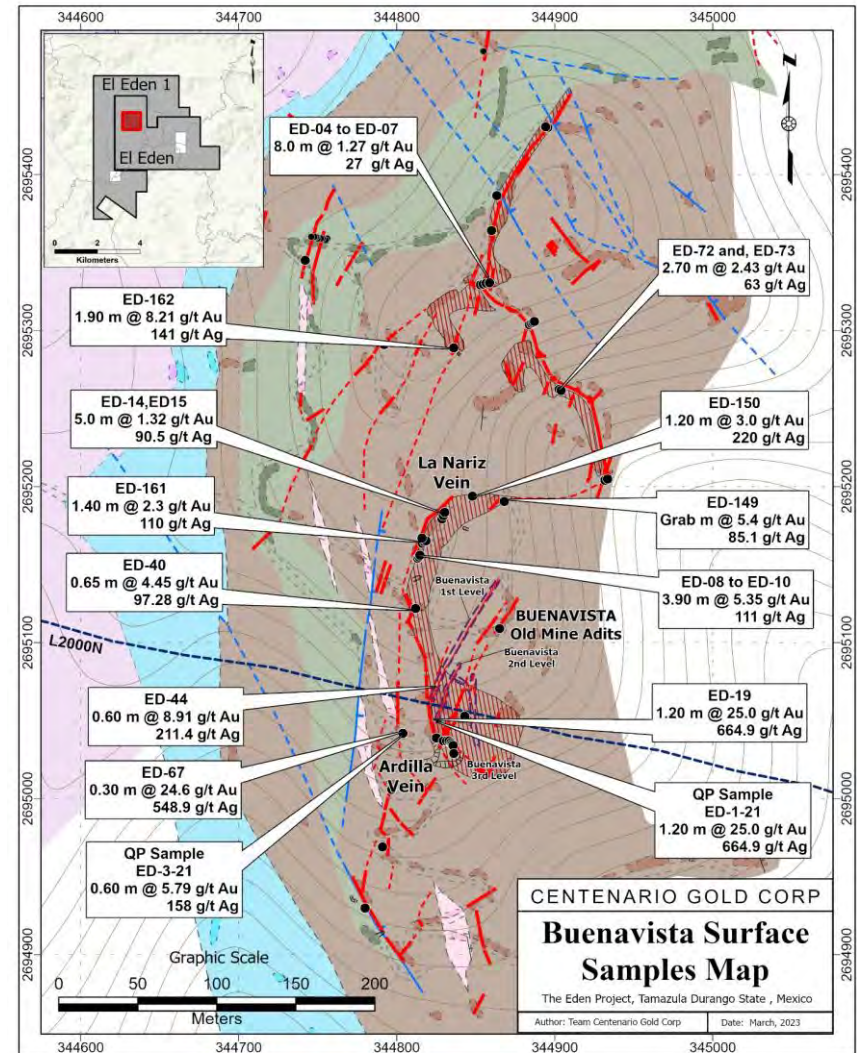
Samples
Width @ Au g/t
Ag g/t

CENTENARIO GOLD CORP

Legend for the Buenavista Adits and Surfaces Samples

The Eden Project
Tamazula, Durango State, Mexico

Author: Team Centenario Gold Corp Date: March 2023



EL EDEN Mineralization Type @ Buenavista



The Eden Au and Ag-bearing structures occur in a system of N-NE trending, Easterly dipping, fissure-filling, quartz-rich, veins, breccias and stockwork zones hosted in coffee-colored andesitic tuffs.



The Buenavista mineralized structure identified so far is greater than 20m in width and extends for more than 2.8 km along a N-NE to S-SE regional fault corridor.

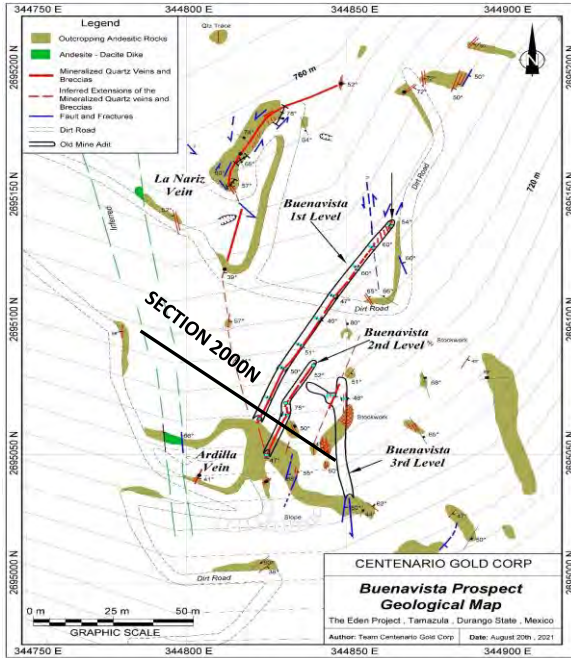
EL EDEN Mineralization Style @ Buenavista



The Au-Ag mineralization at Buenavista is hosted in a high-grade core zone (vein and breccias) accompanied by a 5 to 10 m wide zone of quartz stockworks sitting on the hanging-wall.



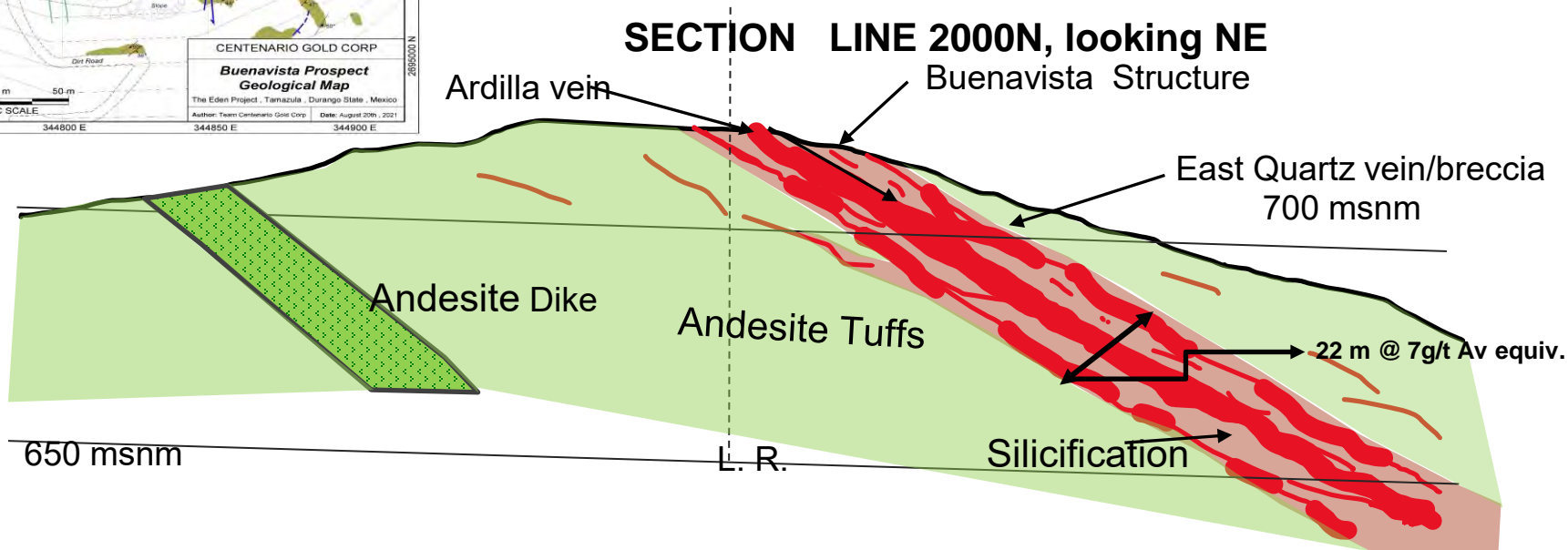
EL EDEN - Buenavista Structure



SELECT ROCK SAMPLE ASSAY RESULTS

Vein	Width (m)	Au (g/t)	Ag (g/t)	*Au Eqv.(g/t)
El Ardilla	0.4	24.6	549	31.46
Buenavista	0.6	240.0	1390	257.38
	1.2	25.0	665	33.31
	1.6	29.9	396	34.85
	0.4	24.6	167	26.69
East Qtz/Brxx Vein	0.6	9.9	220	12.65

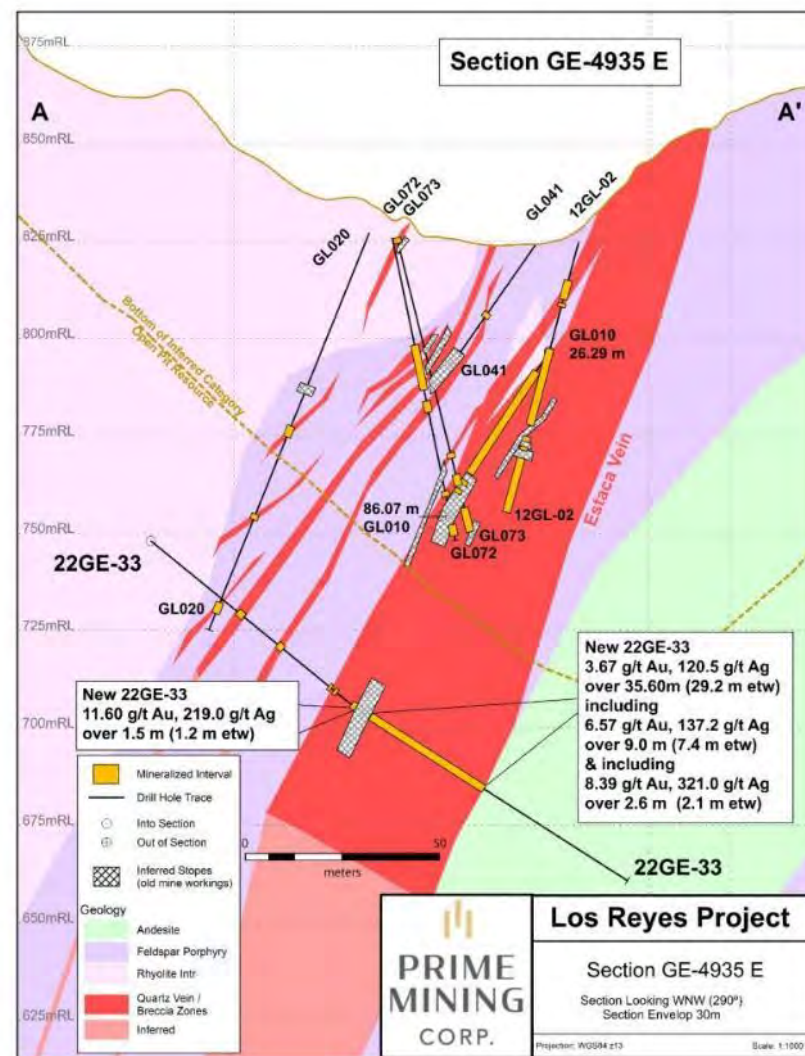
*80 g Ag = 1 g Au



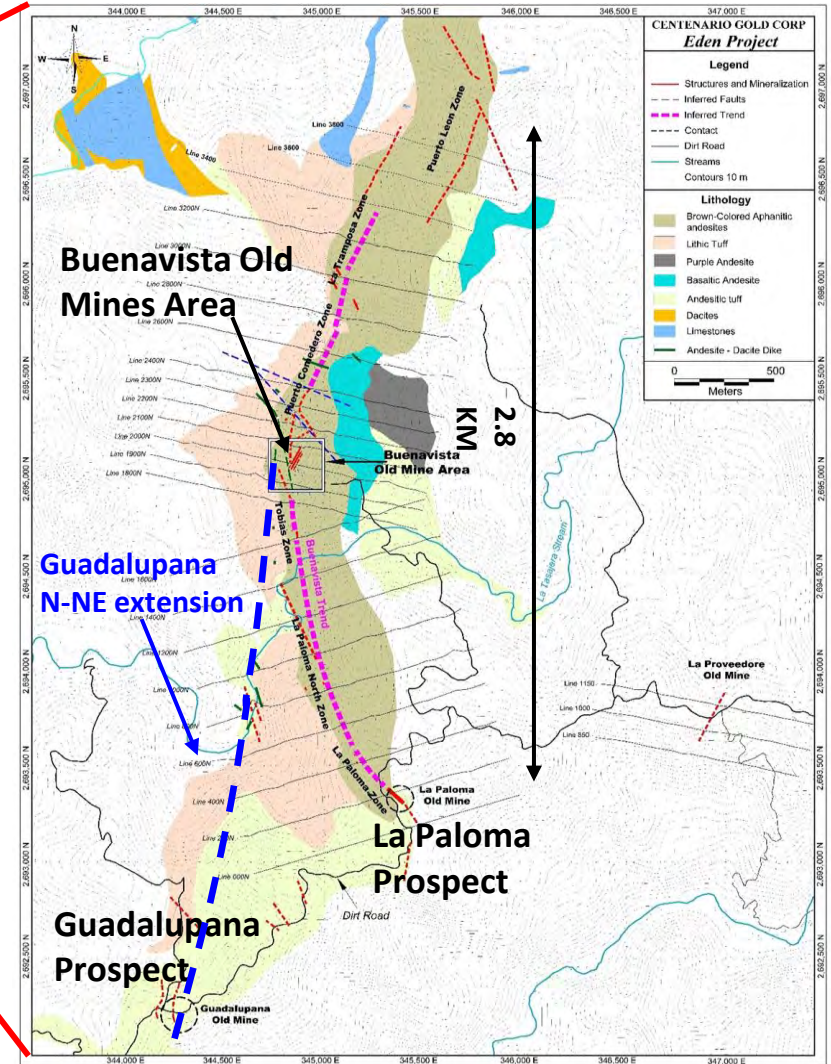
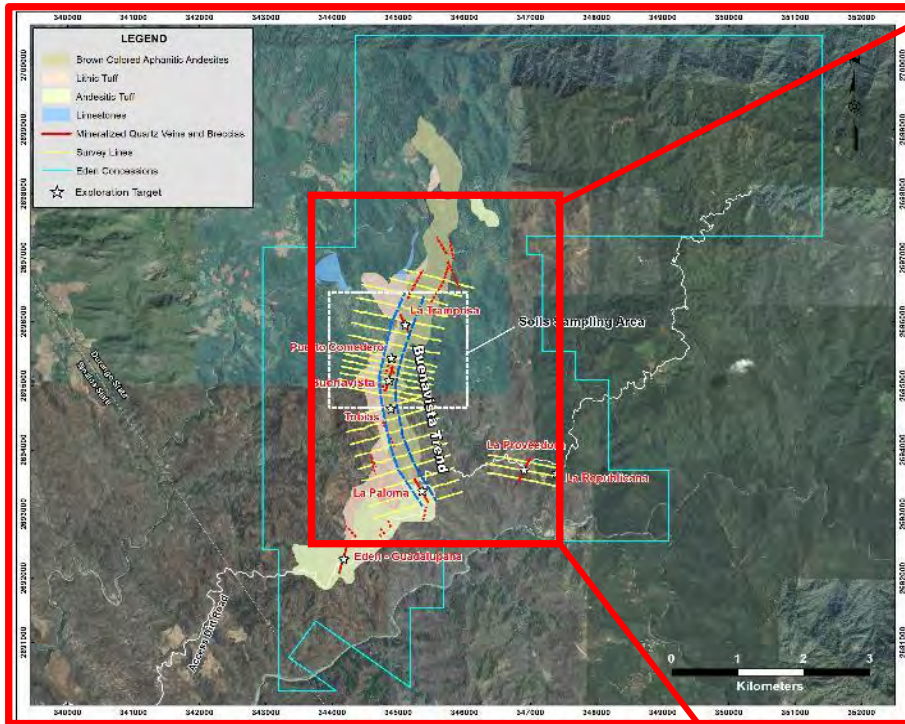


The style of the mineralized system at El Eden is very similar to Guadalupe Los Reyes

- The Au and Ag mineralization found at EDEN, like at Guadalupe de Los Reyes, occurs in a series of quartz rich vein-breccia-stockwork structures which consist of high-grade narrow veins contained in a broader, 10m to 25m wide, lower grade envelope containing intensely oxidized breccias and quartz stockworks.
- Host rocks at EDEN, like at Guadalupe de Los Reyes, are coffee-colored andesite tuffs, ash-tuffs and agglomerates. Both EDEN and Guadalupe de Los Reyes are spatially related to a nearby intrusive body.
- The mineralized structures extend for kilometers along strike and follow regional fault systems. Most of the vein-stockwork systems dip moderately to the E and NE.
- At EDEN, like at Guadalupe de Los Reyes, an earlier, pre-mineralization, volcanic event (rhyolite-dacite dikes, sills and rhyolite domes), served as the main conduits (plumbing system) for the migrating mineralized fluids. Dacite dikes are occasionally seen along the footwall of the vein structures.



EL EDEN The Buenavista Mineralized Corridor

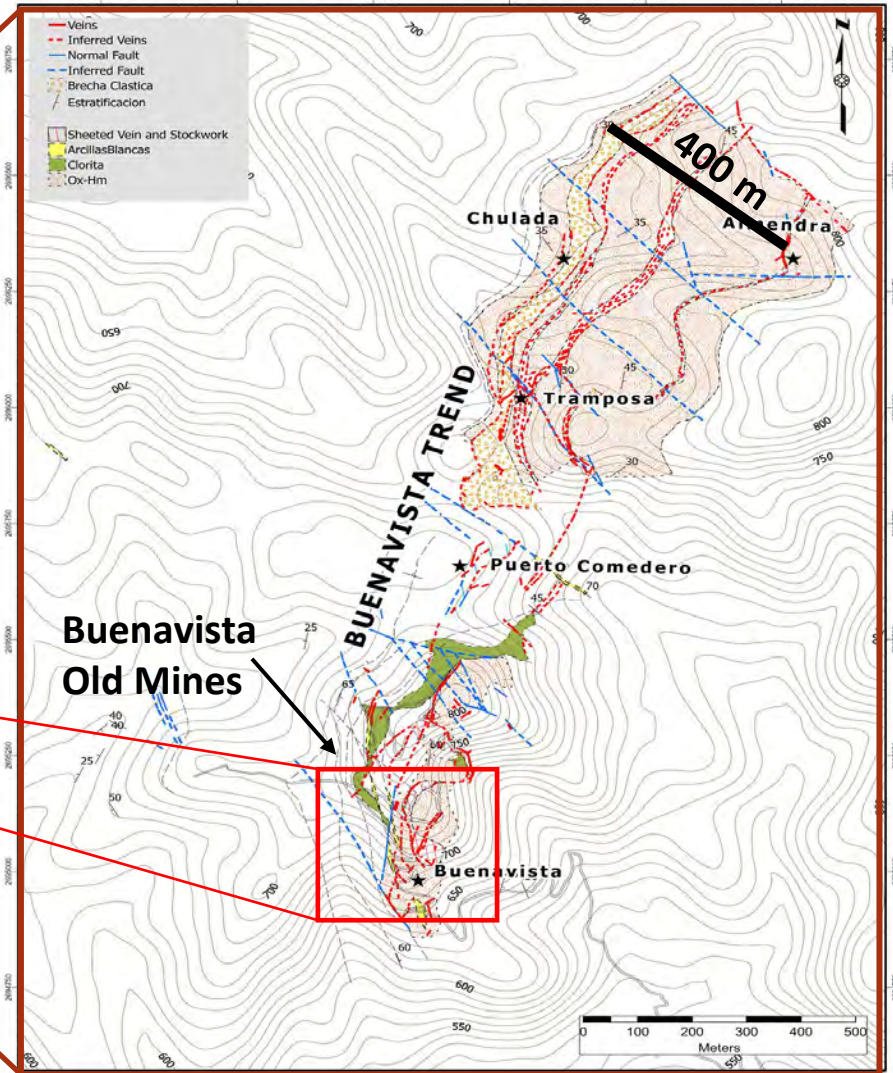
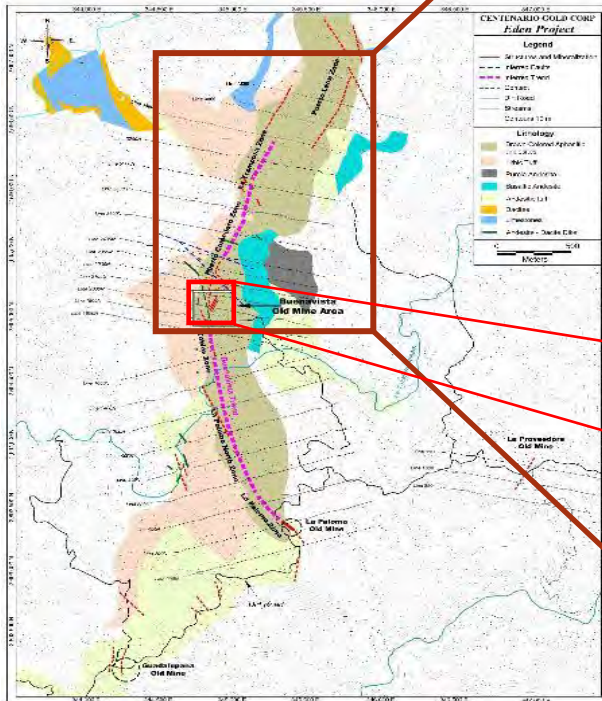


Geological mapping, geophysics, and rock and soil sampling across the N-NE and S-SE extensions of the Buenavista mineralized corridor have confirmed the continuity of the mineralized system 1.3 km N-NE of the old mine workings and 1.5 km S-SE connecting with the La Paloma Prospect.

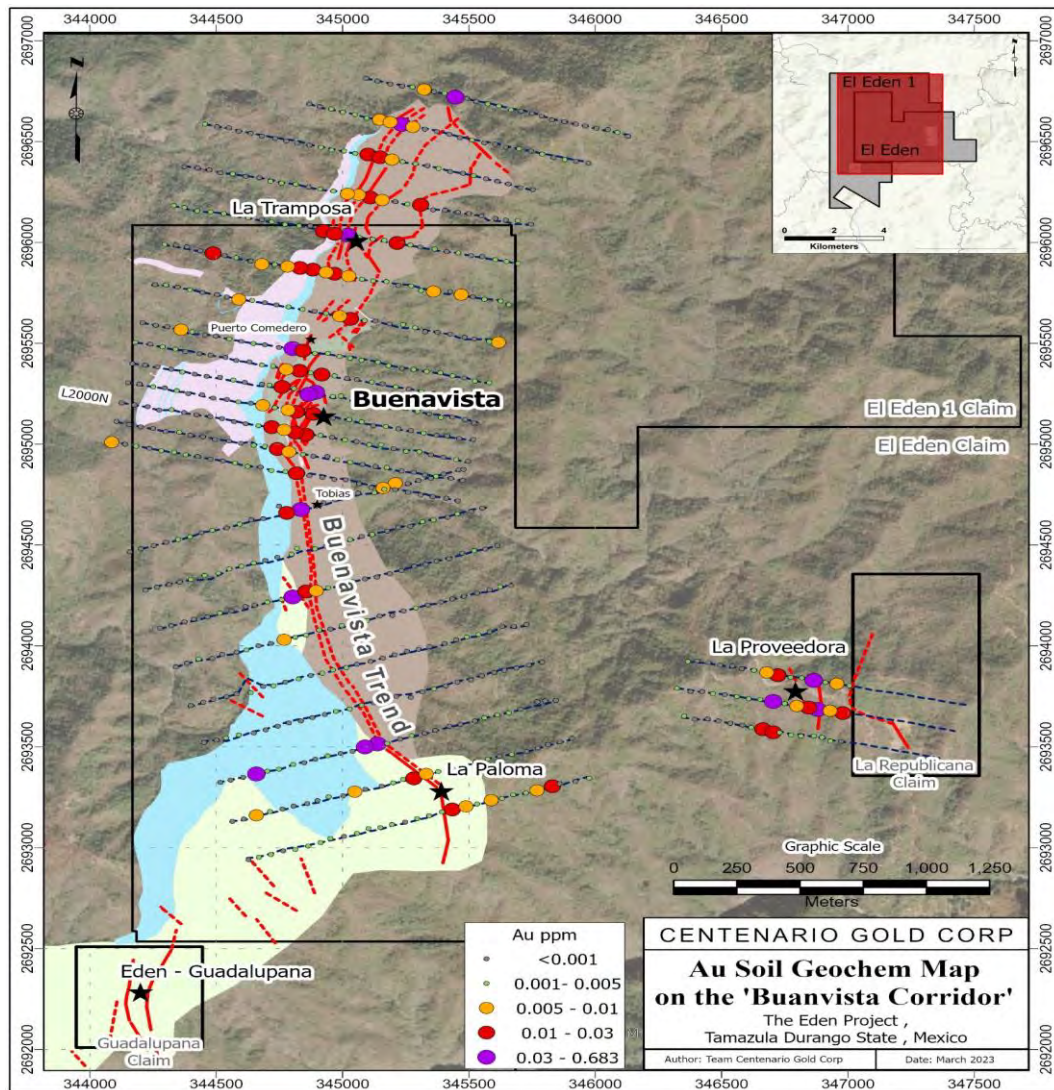
EL EDEN Recent detailed Mapping along the N-NE Extension @ Buenavista Mineralized Corridor



The new sampling and mapping on the N-NE extension of the Buenavista prospect shows that the mineralized corridor splits in 3 main N20E trending branches spread across an area of 400 meters.



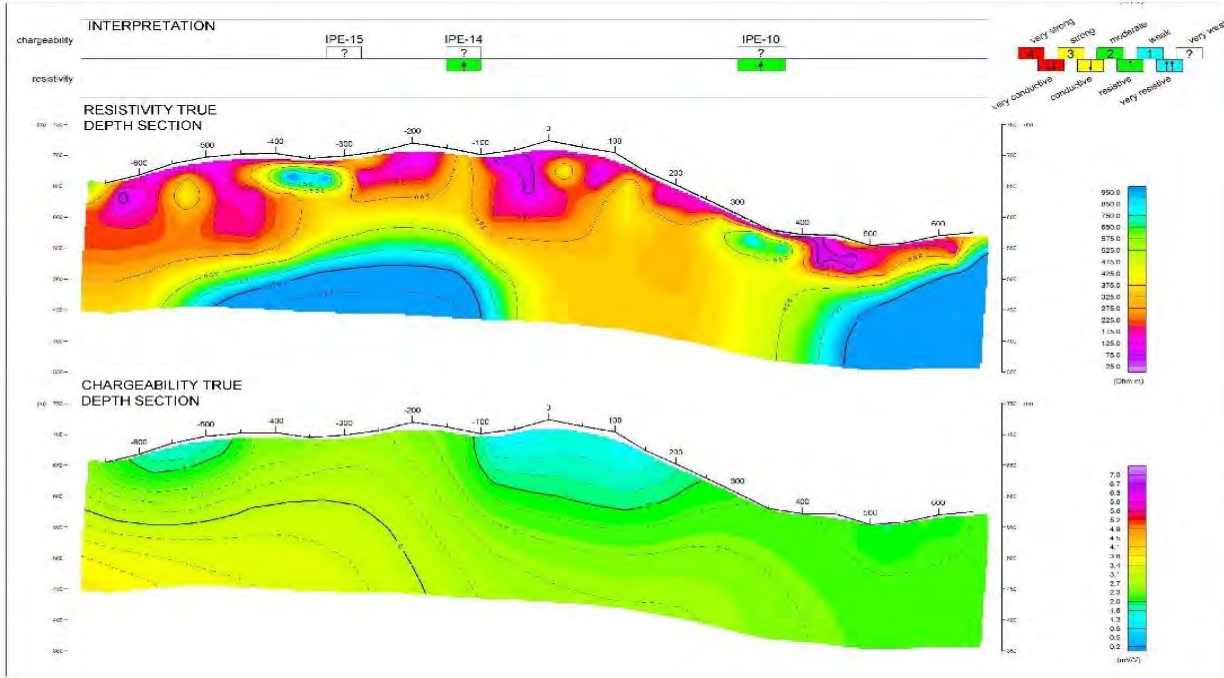
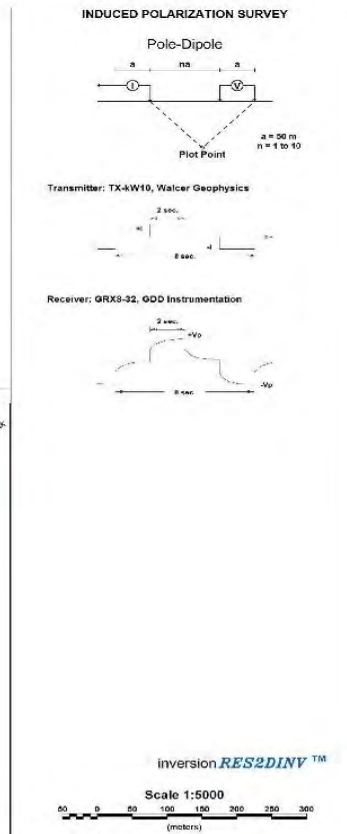
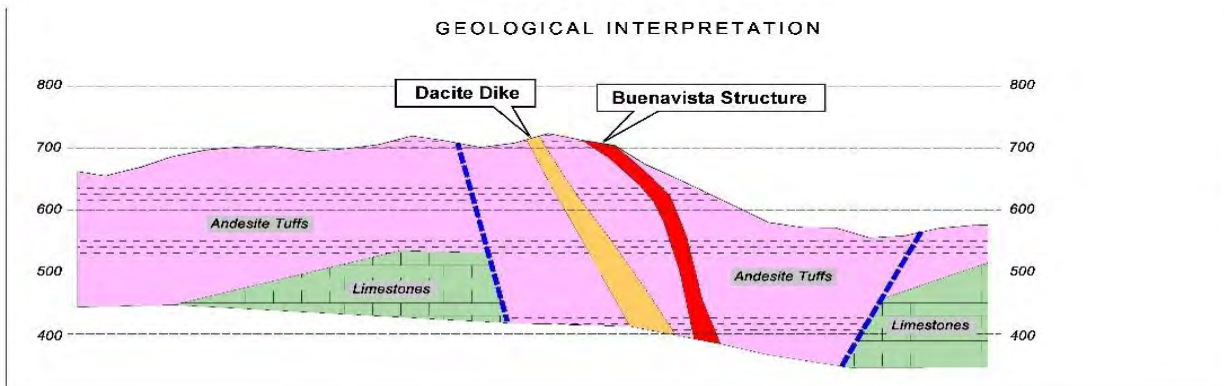
EL EDEN Buenavista Corridor Soils, Au



Based on the results obtained from the geochemical soil samples the Au-Ag mineralization is continuous to the N-NE of the Buenavista corridor.

The results show the existence of an anomalous corridor (Au and Ag), approximately 200 meters wide, and 1,200 meters long, following the N-N20E trending mineralized corridor north of the 'Buenavista' old mine workings area. Also extending to the south southeast approximately 1500 metres to La Paloma and southwest to Guadalupana. Out of the 32 elements analyzed, only Au, Ag and Ba, appear to act as pathfinders. There is no other trace elements except for a weak response from Ba that coincide with the Au and Ag soil anomaly.

EL EDEN Buenavista Section Resistivity L-2000N



CENTENARIO GOLD CORP.

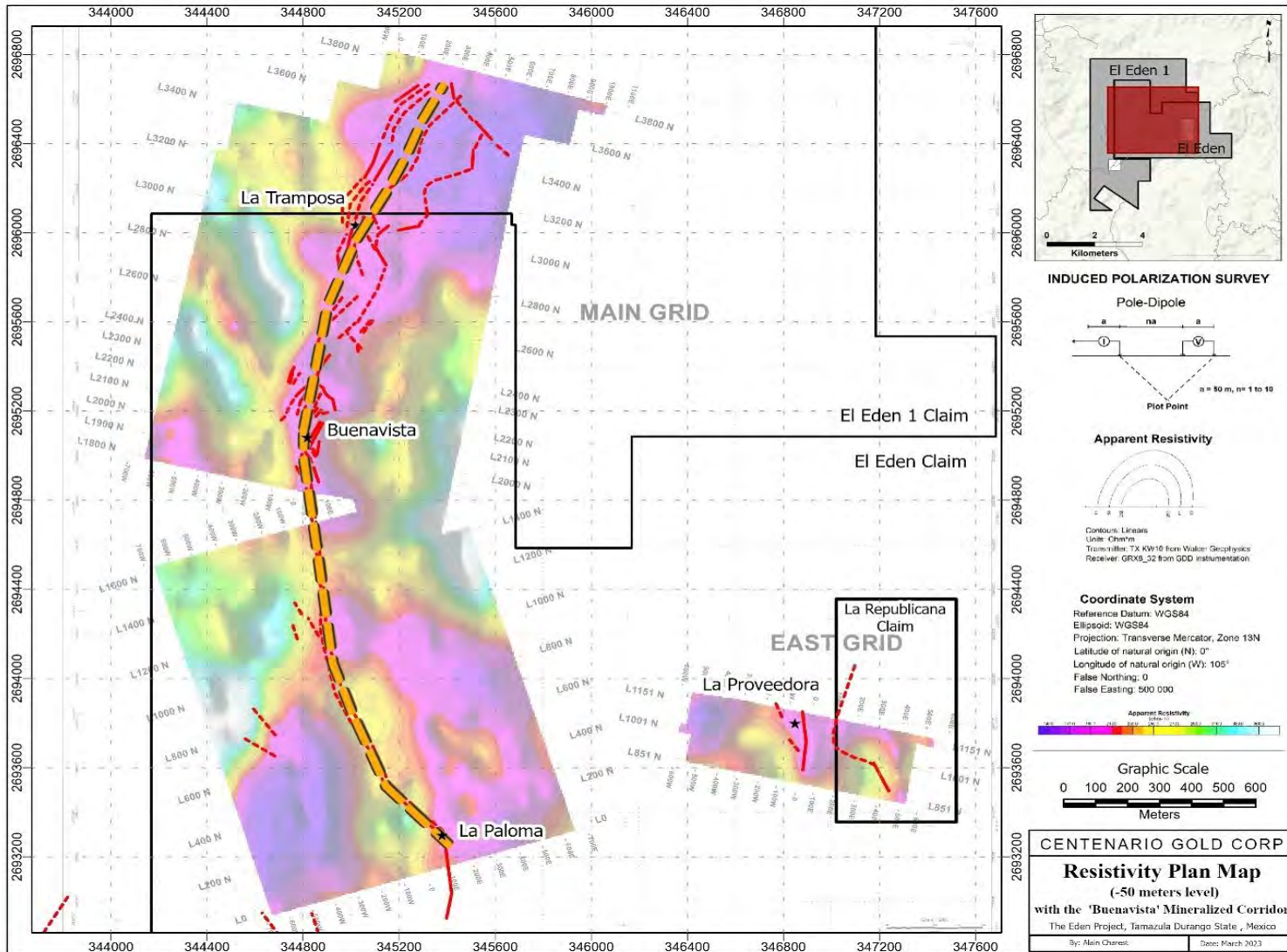
**EDEN PROJECT
 DURANGO STATE
 MEXICO**

Line 2000N

Interpreted by: Joel Simard, P. Geo./Geoph.
 Verified by: Joel Simard, P. Geo./Geoph.
 Surveyed by: Gerardo del Val
 Date: 2021/2022
 Ref: 24C-221

**TMC
 EXPLORACION**

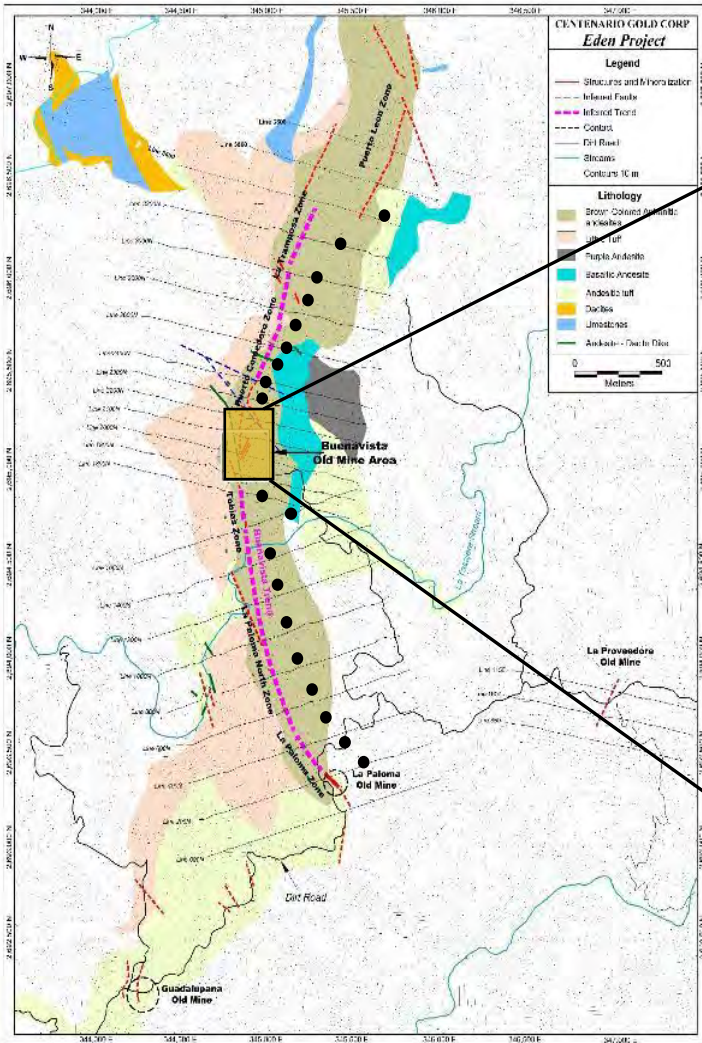
EL EDEN Buenavista Corridor Resistivity Plan Map



EL EDEN Proposed Drilling Program 2023



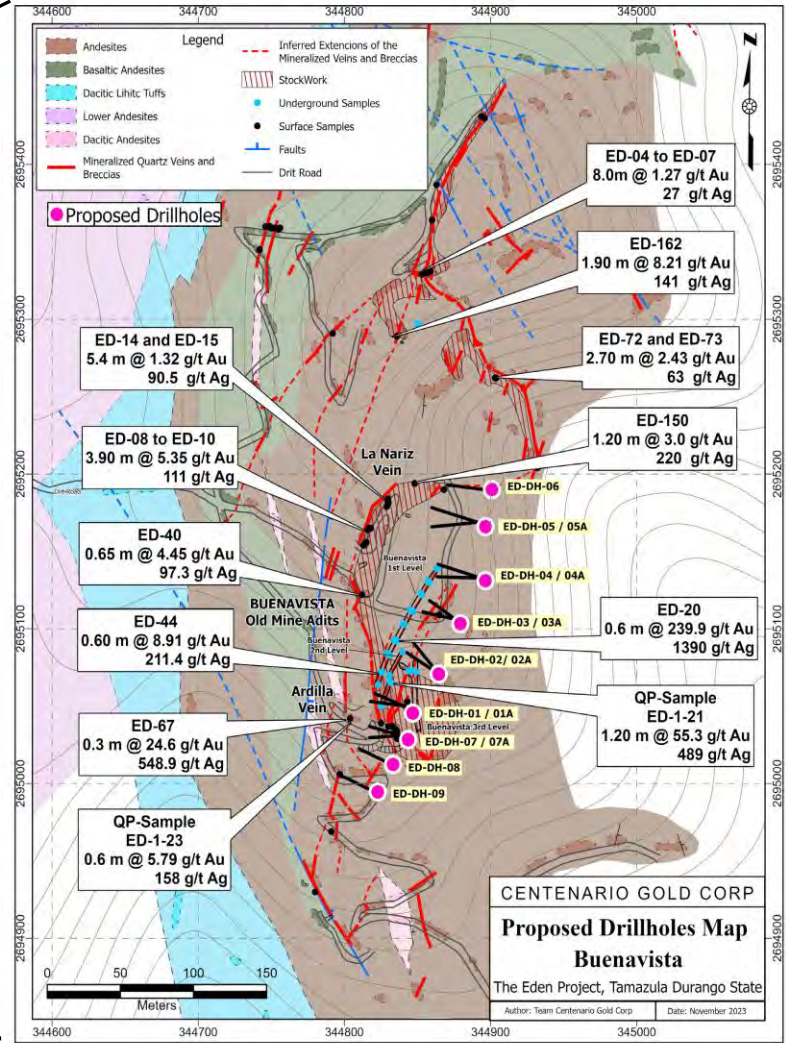
Proposed Second Phase Drilling



EDEN DRILLING 2023

- 1st Phase Drill Program: 9 holes, Total 1,500 meters
- 2nd Phase Drill Program: 22 holes, Total 5,000 meters
- Holes oriented perpendicular to mineralized structures and dipping between 45 and 75 degrees. Depth of holes will vary between 100m and 300 m. Two test holes on the La Providora prospect

Proposed First Phase Drilling



Exploration Programs & Activities for 2023



EDEN PROJECT EXPLORATION PROGRAM 2023

- 1,500 meter Phase 1 Drill Program on the Buenavista Prospect
- Semi-detailed mapping and sampling along the sub-parallel Guadalupana N-NE extension and along the La Provedora vein-breccia systems
- Continue to extend the mapping and sampling to the north/ north east beyond the latest mapping in the Buenavista Corridor

REGIONAL EXPLORATION

- Continue to evaluation (mapping and sampling) and acquire 'high potential mineral prospects' throughout Mexico. We are currently assessing 4 separate targets in the states of Sonora, Durango and Chihuahua



Potential Prospect

Buenavista Adit



CENTENARIO GOLD CORP. Share Structure



	Number
Common shares, issued and outstanding	41,499,156
Warrants Outstanding	
\$0.20 warrants expire February 1, 2025	1,268,992
\$0.30 warrants expire October 26, 2025	5,851,834
	7,120,826
Agents' Warrants Outstanding	
\$0.10 warrants expire August 16, 2026	400,000
\$0.15 warrants expire October 26, 2025	784,986
	1,184,986
Options Outstanding	
\$0.10 options expire August 16, 2026	600,000
\$0.15 options expire October 26, 2028	3,100,000
	3,700,000
Common shares, fully diluted	53,504,968

Centenario's Corporate Structure

~ 40,000,000 shares O/S listing at \$0.15
(approx. 13.5 million shares are escrowed for 3 years)

Market Capitalization on Listing at financing price

Approximately **\$6,000,000**

Prime's Corporate Structure

~ 141,000,000 shares O/S trading at \$1.60

Market Capitalization

Approximately **\$225,000,000**

Management Team & Board



<p>Douglas Fulcher, President & Director Audit Committee</p>	<p>Doug has over 45 years experience in mining exploration and project management, he also has over twenty years experience as President, CEO of publicly trading junior resource companies such as Abacus Mining's – Ajax deposit and Maritime Resources – Hammerdown deposit.</p>
<p>Alain Charest, CEO, Director VP Exploration</p>	<p>Alain is a geological engineer with more than 35 years in major and junior company exploration worldwide. He spent the past 27 year in Mexico exploring and developing mining operations. For more than 12 years Alain acted as VP Exploration for Francisco Gold Corp. and Chesapeake Gold Corp both companies operating in Mexico.</p>
<p>Jonathan Younie, CFO</p>	<p>Jonathan has more than 20 years of experience in the accounting field and corporate and regulatory operations. He has been involved and responsible for taking a number of companies through to listing on both the TSX Venture Exchange and the CSE.</p>
<p>Pablo Mendez Alvidrez, Director, Mexican Legal Counsel Audit Committee</p>	<p>Pablo Méndez joined legal firm Ec Rubio in October 2004 and became partner in March 2010. In 2007 he opened the Mining Area of the firm and has been its Director since. In 2017 he was appointed Managing Director of the Chihuahua office., From 2002 to 2004, he worked for the Ministry of Foreign Affairs at the Consulate of Mexico in Albuquerque, New Mexico, U.S.. His areas of expertise are civil, commercial and banking litigation, mining, international affairs, amparo and immigration.</p>
<p>Kevin Milledge, Director Audit Committee</p>	<p>Mr. Milledge has over 45 years' experience as a businessman and entrepreneur in the mineral exploration field. Mr. Milledge is president of Pamicon Developments Ltd which is a full-service geological consulting firm with global experience. He has held management and executive positions and has extensive experience in project planning, development, and budgeting. Kevin has served on the boards and committees of several public companies trading on both the TSX Venture Exchange and Canadian Securities Exchange.</p>
<p>Steve McGuire, Corporate Development</p>	<p>Steve is a Venture Capitalist with over 25 years of experience in the public and private markets. During his career, he has helped provide a strong focus on corporate and shareholder communications for numerous public companies. Steve has been instrumental during his career in securing funding in excess of \$40 million.</p>
<p>Almendra Lechuga, Operations Manager</p>	<p>Almendra has over 20 years of experience in the mining/resource industries in Mexico acting as Operation Manager and has extensive experience in permitting, property negotiations and accounting with all aspects of the mining industry. She plays a critical role in our Mexican operations.</p>



Alain R. Charest, CEO, Director

- 2005-2020, Consultant, VP of Exploration for Mexico, EVRIM RESOURCES INC.
- 2009-2020, President & VP of Exploration for Arcelia Gold Corp. (Canadian private company)
- 2000-2008, VP of Exploration for Chesapeake Gold Corp
- 1994-2000, exploration geologist and VP of Exploration for Francisco Gold Corp
- 1993-1994, geophysical consultant for Noranda Mining in Mexico
- 1987-1993, completed Geological Engineering studies at UBC (University of British Columbia)

Hermilo Mendoza Hernandez, Senior Exploration Geologist

- 1982-1996, Project Geologist for Fresnillo PLC & Penoles SA de CV.
- 1996-2010, Project Geologist for Francisco Gold Corp. where is was involved with El Sauzal mine in Mexico as well as the Marlin mine in Guatemala, two world class gold mines
- 2008-2014, Hermilo was VP Exp. for Arcelia Gold a company run by Alain Charest
- 2015 – 2022, Hermilo was the Senior Exploration Geologist for Agnico – Eagle, Mexico. He was involved in their major mining project El Barqueno in Jalisco, Mexico as well as Santa Gertrudis and La India in Sonora state, Mexico.
- September 2022, Hermilo started consulting for Centenario Gold Corp.

Almendra Lechuga, Operations Manager Mexico

- 2009-2020, Operations Manager for Arcelia Gold Corp. (Canadian private company)
- 2006-2009, completed Artificial Intelligence Studies at Concordia University, Montreal, QC
- 2004-2006, assistant to VP of Exploration for Chesapeake Gold Corp
- 1999-2003, completed Systems Engineering studies at Tecnología de Chihuahua

CENTENARIO GOLD CORP Contact Information



Doug Fulcher
President, Director
M: (604) 803-5901
dfulcher@centenariogold.com

Alain-Roch Charest
CEO, VP Exploration, Director
alainc@centenariogold.com

Steve McGuire
Corporate Development
M: (604) 762-7869
smcguire@centenariogold.com



Centenario Gold Corp's Almendra Lechuga, with the 'Comunidad de San Antonio del Cerro' representatives, January 2022

Centenario Gold Corp.

Suite 615 – 800 West Pender Street, Vancouver, BC, V6C 2V6