

CABOT COPPER, GOLD, COBALT PROJECT NEWFOUNDLAND AND LABRADOR



Developing High Grade Copper, Gold and Cobalt Projects
in Canada and Mexico





Disclaimer

The information contained herein, while obtained from sources which we believe are reliable, is not guaranteed as to its accuracy or completeness. The company is an exploration stage mineral resource exploration company and none of its mineral projects have yet to be proven to be economic. The contents of this presentation is for information purposes only and does not constitute an offer to sell or a solicitation to purchase any securities referred to herein.

Forward-looking Statements

This presentation includes certain forward-looking statements about future events and/or financial results which are forward-looking in nature and subject to risks and uncertainties. Forward-looking statements include without limitation, statements regarding the company's plans, goals or objectives and future exploration, development, potential mineralization, exploration results and future plans and objectives of Centenario. Forward-looking statements can generally be identified by the use of forward-looking terminology such as "may", "will", "expect", "intend", "estimate", "anticipate", "believe", or "continue" or the negative thereof or variations thereon or similar terminology. There can be no assurance that such statements will prove to be accurate and actual results and future events could differ materially from those anticipated in such statements. Important factors that could cause actual results to differ materially from expectations include risks associated with mining generally and exploration stage projects in particular. Potential investors should conduct their own investigations as to the suitability of investing in securities of Centenario.

Cabot Prospect



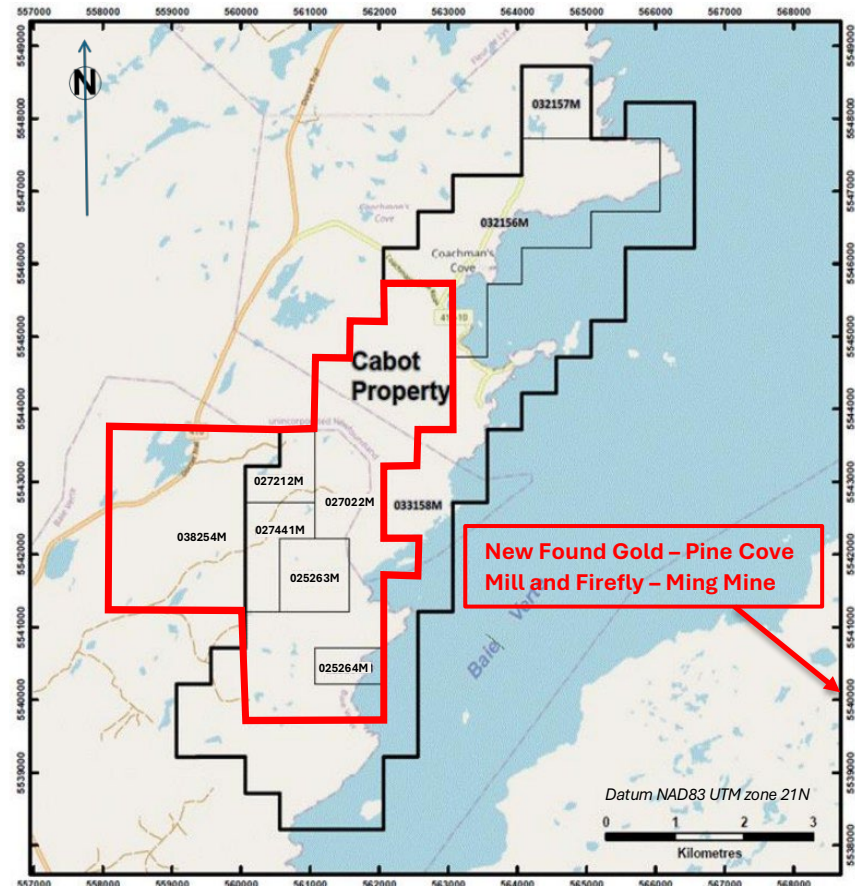
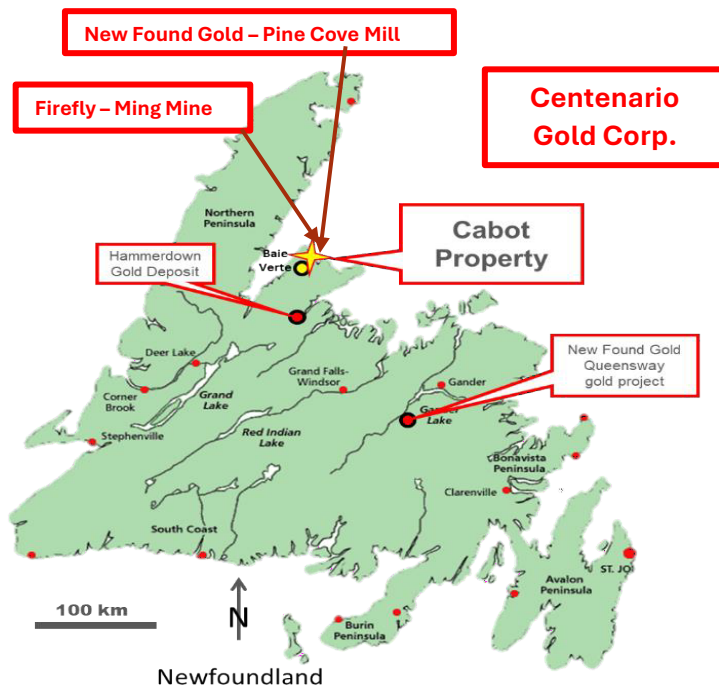
Sericite + pyrite Type Mineralization associated with the Cabot Prospect

Claims & Location and Access



The Cabot Property is located in the northeastern corner of the Baie Verte Peninsula, northern Newfoundland and Labrador, approximately 623 km northwest of St. John's, Newfoundland and Labrador, and 20 km north of the town of Baie Verte. The Property lies 3 km north of the abandoned Baie Verte open pit asbestos mine and is bordered on its east side by Baie Verte. The main Cabot Copper prospect is located 3 km south of the community of Coachman's Cove

- The Cabot Property comprises 6 contiguous mineral licenses covering 1,700 hectares (Table 1; Fig. 2) within NTS map sheets 12I/01 and 12H/16.
- Across the Bay from both Firefly's Ming Mine and New Found Golds, Pine Cove Mill

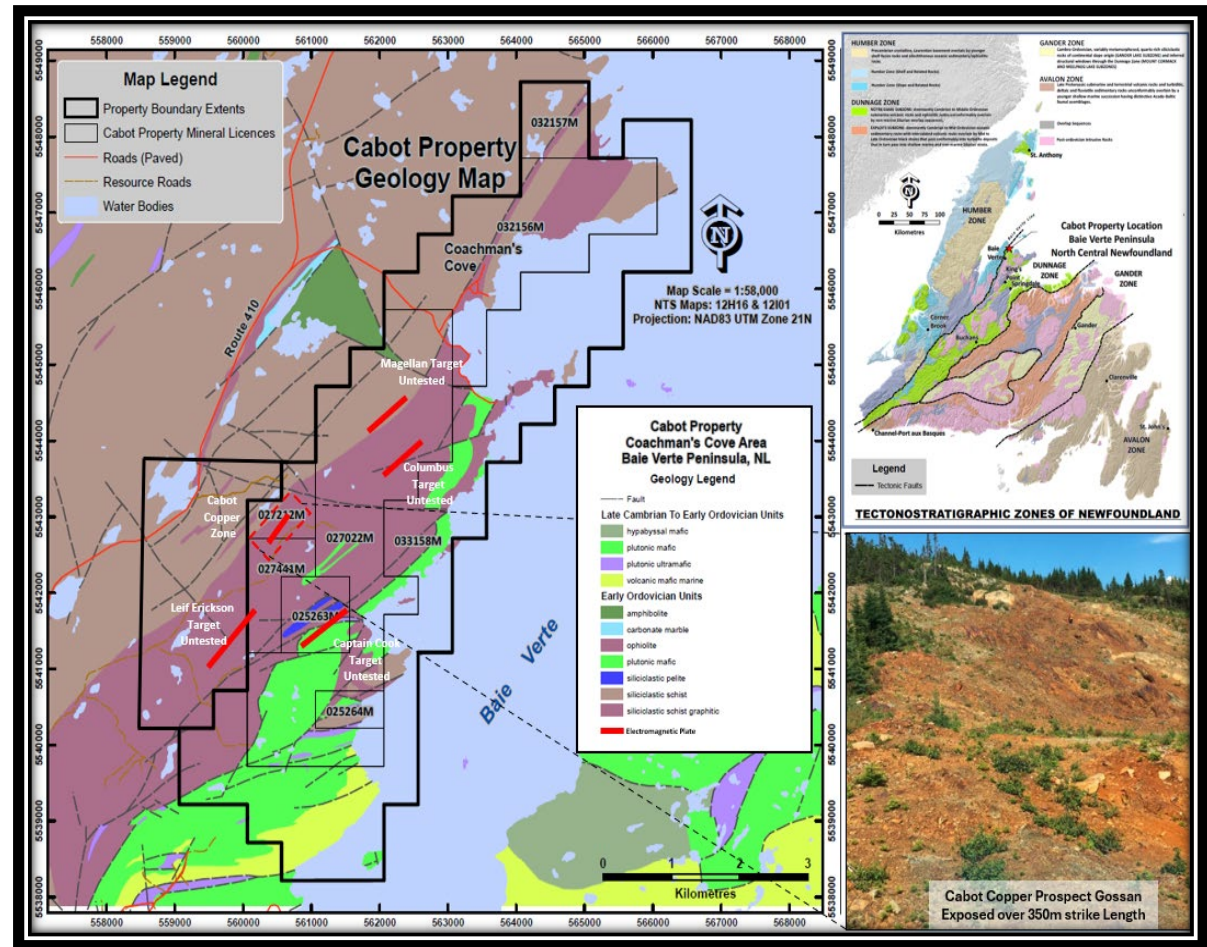


CABOT Project Location & Proximity to Ming Mine



Cabot Copper Project

- Located in the prolific Baie Verte Mining District known for Large High-Grade Massive Sulphide and Orogenic Gold Deposits
- Nearby Green Bay Copper Gold Project Resource 59Mt @ 2% CuEq just 35km by provincial highway
- Prospecting, Trenching and Drilling delineate VMS and Stringer Copper Mineralization over 900m Strike Length down to 450m depth.
- 30.75 Square Kilometer Property
- 5 Drill Ready Targets consisting of EM Plates with Cu in soil anomalies and surface sulphide mineralization
- Skilled workforce with mining expertise
- Nearby processing facilities reduce costs and timelines

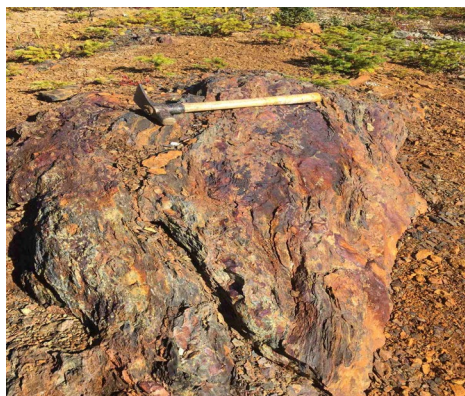


Cabot Project Comparisons



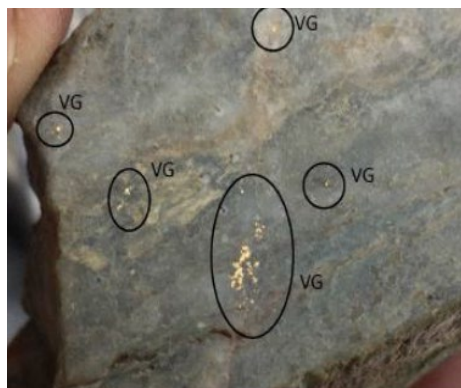
Cabot Prospect

- 900m long surface Sulphide trend
- Massive Sulphides and Stringer Envelope
- Open Pit Target
- 4 Additional untested EM Target
- Up to 6.9% Cu in Grab



Marble Cove Gold Prospect

- Orogenic Vein Hosted Gold Prospect returning up to 70.38 gpt Au in Grab.
- 3km West and across the Bay from of Point Rouse Gold Project a large orogenic Gold Trend Project that produced 200kOz Au and is bound to the west by coast.



Gull Island Prospect

- Massive to Semi-Massive Sulphides
- Returned up to 9.1% Cu.



Comparisons to the Ming Mine



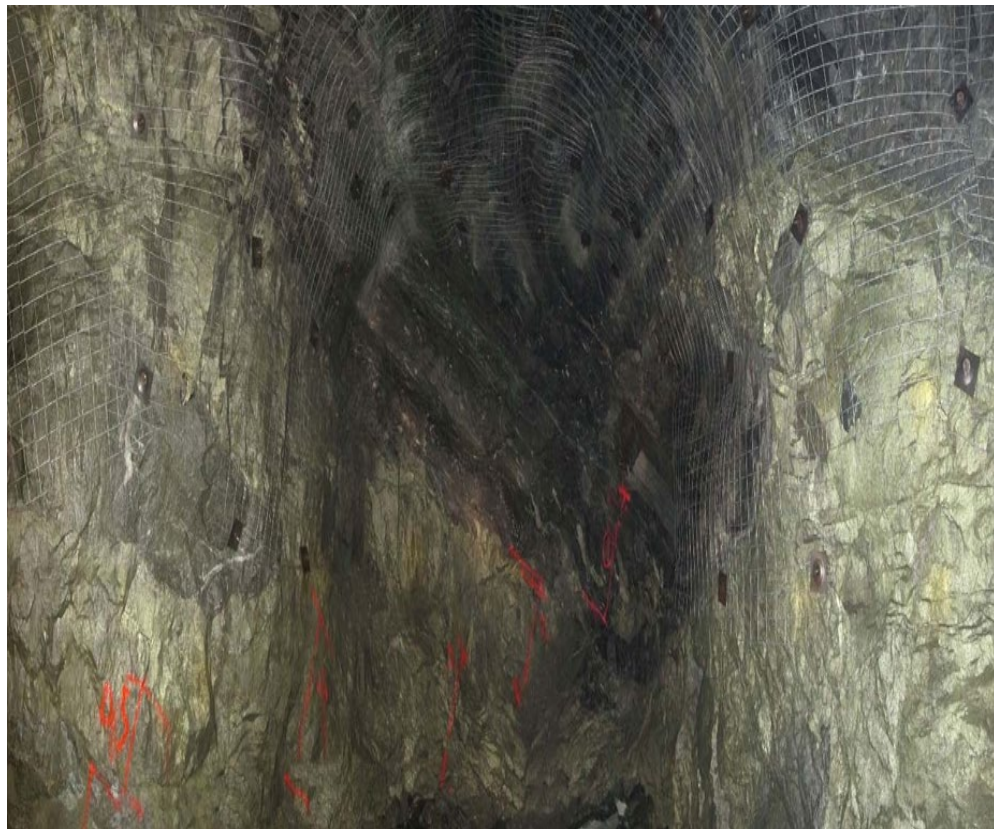
	MING MINE (FIREFLY)	CABOT PROSPECT	COMPARISON & SIGNIFICANCE
Deposit Size and Type	50Mt Resource 2%CuEQ in Bimodal Mafic-Felsic VMS	Pre-Resource Bimodal Mafic-Felsic VMS Similar to the Ming Deposit Or Besshi Type similar to the Tilt Cove Deposit 8Mt of 3% Historic Production	The Cabot Prospect and Ming Deposits occur along a convergent plate boundary and related to both mafic and felsic volcanics and volcanoclastics.
Host Rock	Felsic (rhyodacite), mafic components	Mafic and Felsic volcanoclastic assemblages	Both felsic; Ming is bimodal-mafic, Cabot felsic to intermediate.
Iron Formation	Present, discontinuous near mineralization	Parallel to mineralization	Both show exhalative component, aiding geologic correlation.
Sulfide Assemblage	Cpy, Py, Po, Bo, Sph,	Cpy, Py, Po, Bo, Sph,Co	High-temp (>300°C) VMS-related sulfides in both.

Comparisons to the Ming Mine



	MING MINE (FIREFLY)	CABOT PROSPECT	COMPARISON & SIGNIFICANCE
Hydrothermal Alteration	Ser-Chl-Carb, Qtz	Ser-Chl-Act-Qtz	Strong alteration in both; Cabot has more deformation.
Tectonic Setting	Near Convergent Plate Boundary, Baie Verte Brompton Line	Near Convergent Plate Boundary, Baie Verte Brompton Line	This setting promotes large-scale VMS deposits due to high-temperature hydrothermal activity at plate boundaries.
Gold Association	Au in late-stage hydrothermal overprint	Fine-grained Au in Py; remobilization	Both have Au, Cabot's distribution requires more study.
Occurrence	Occurs as clusters VMS lenses and broad stringer system	Occurs as VMS and Stringer system with multiple untested EM and Soil Targets	<p>The Ming Deposit is an amalgamation of multiple VMS lenses/deposits with a large feeder system.</p> <p>The Cabot has one well documented occurrence and several untested EM and Soil Targets suggesting potential for the presence of multiple lenses/deposits.</p>

Massive Sulphide Facies



Ming Mine

Chalcopyrite Rich Massive Sulphide

WSP Limited 2018 Technical Report on the Ming Copper-Gold Mine

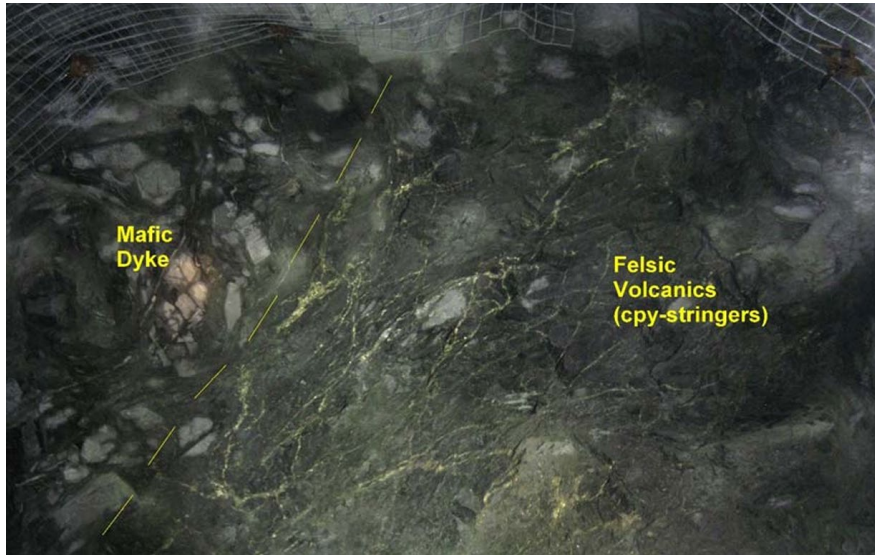


Cabot Prospect

Boudinaged lense of pyritic massive sulphide

Samples returning up to 5.3% Cu at Cabot Prospect

Chlorite-Chalcopyrite Facies



Mine Mine

Lower Footwall Zone

**Stringer Type ore from the Ming
Deposit associated with Cpy and Bo in
a chlorite altered Felsic Volcanic
WSP Limited**

2018 Technical Report on the Ming Copper-Gold Mine



**Robins Brook Prospect (L) and Cabot
Prospect (R)**

Cabot Project

**Stringer Type Chalcopyrite+Bornite
bearing chlorite altered Mafic(?)
Volcanics**

Sericite-Rich Alteration Facies



Ming Mine Lower Footwall Zone

Quartz-Sericite-Pyrite alteration

Jean-Luc Pilote 2018 PHD on the Ming Copper Gold Deposit

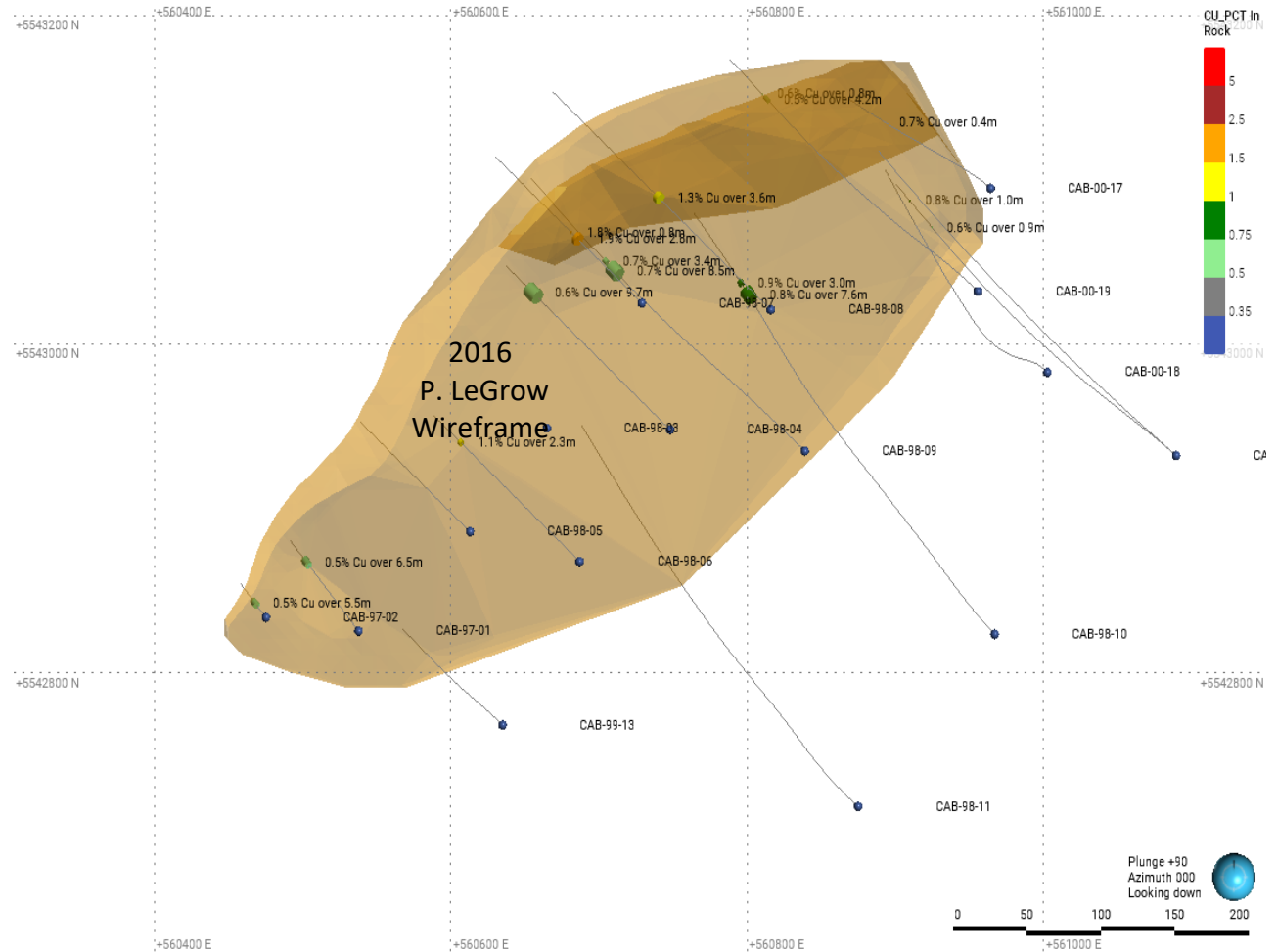
Cabot Prospect Sericite+pyrite Type Mineralization associated with the Cabot Prospect

3D Compilation and Wireframe Model



- 3D Historic Data Compilation and wireframing Completed.
- Surface trenching exposes extensive mineralization as both thin massive sulphide lenses and broad stringer envelope.
- Magnetic Iron Formation mapped and encountered in drilling East of prospect
- 2021 Petrographic Study by Stephen J. Piercey Concluded:

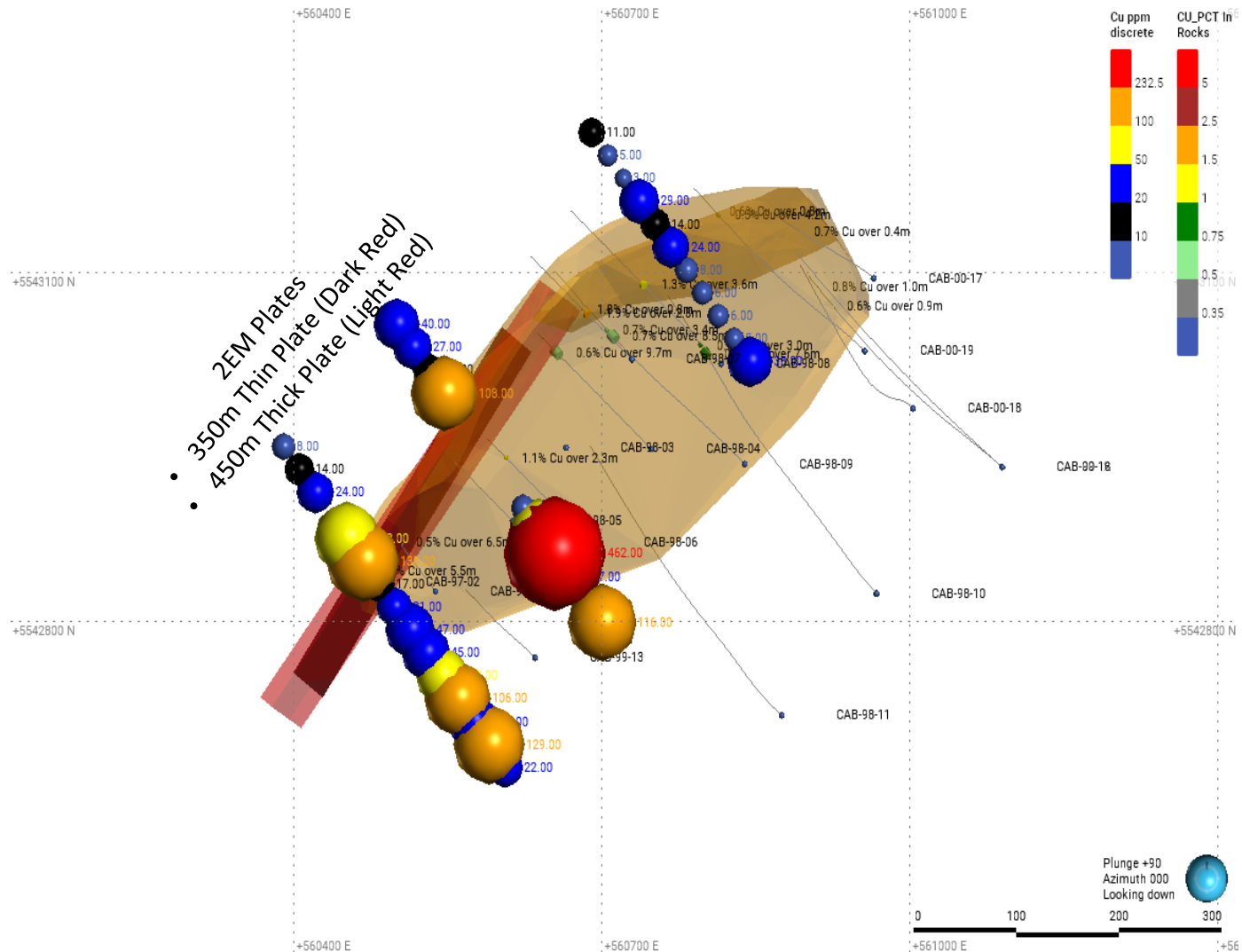
“The sulfide minerals are dominated by a primary assemblage of pyrrhotite and chalcopyrite and lesser sphalerite, typical of high temperature ($T > 300\text{C}$) VMS mineralization.”



Targeted Geochemical Baseline Study Conducted at known Prospect



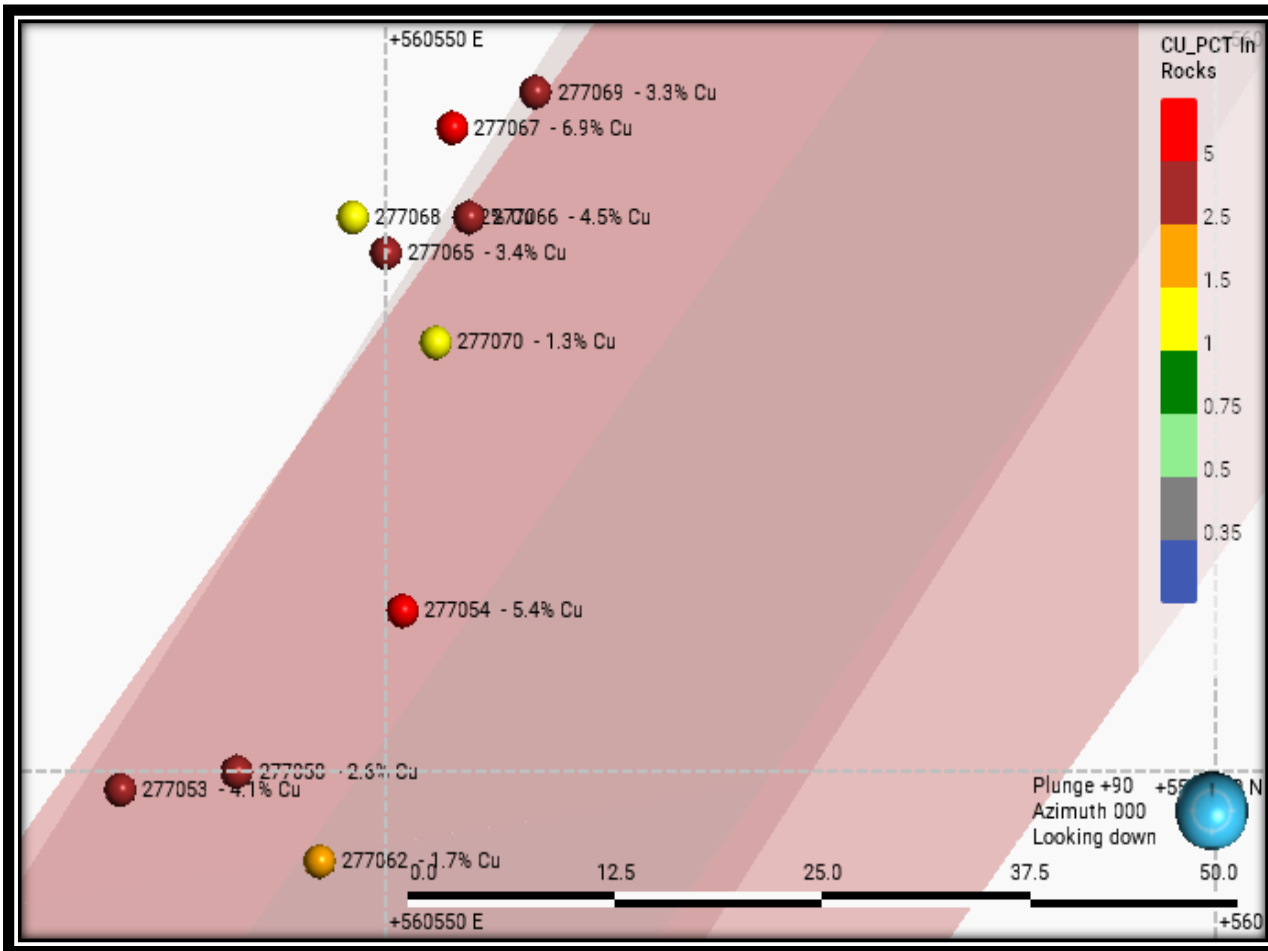
- To validate the EM Plate Models a Strategic Soil Survey was conducted over each conductive Plate.
- Baseline Survey was conducted over known showing with values of 50-462ppm Cu occurring near known surface Copper Mineralization.
- Additional Soil anomalies east of prospect may indicate down slope drainage or untested targets.



Cabot Surface Trench Sample



Cabot Prospect Trench Sampling



- 2022 Sampling from Cabot Prospect trenching returned 1.3 to 6.9% copper.
- Copper occurs as Chalcopyrite and Bornite.



5 EM Plates Identified on the Property with comparable soil chemistry anomalies

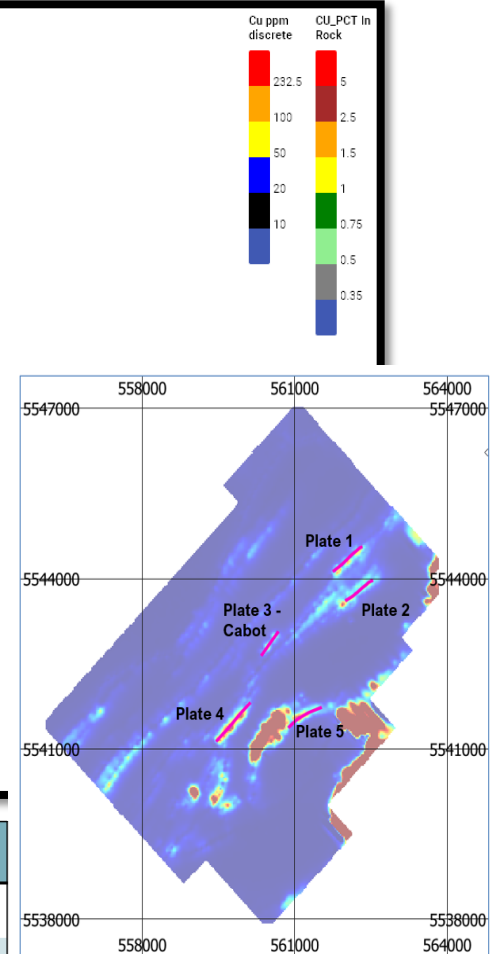
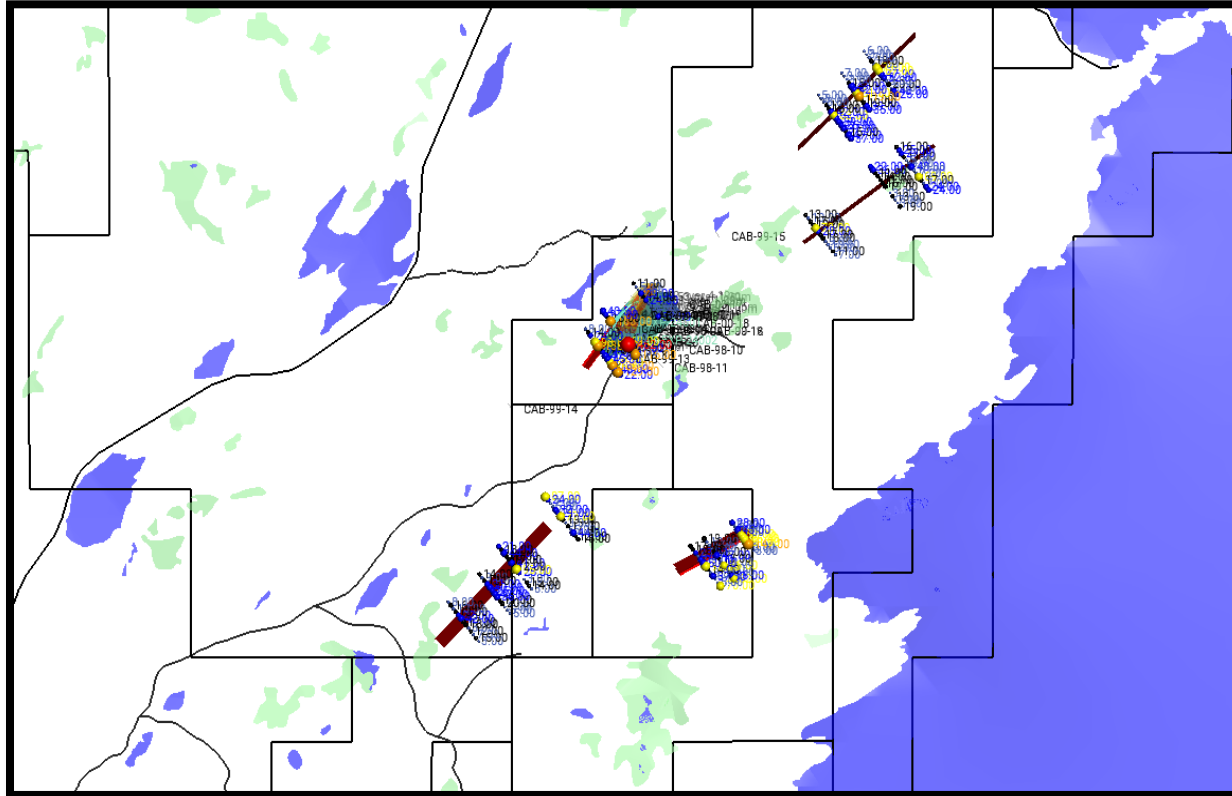


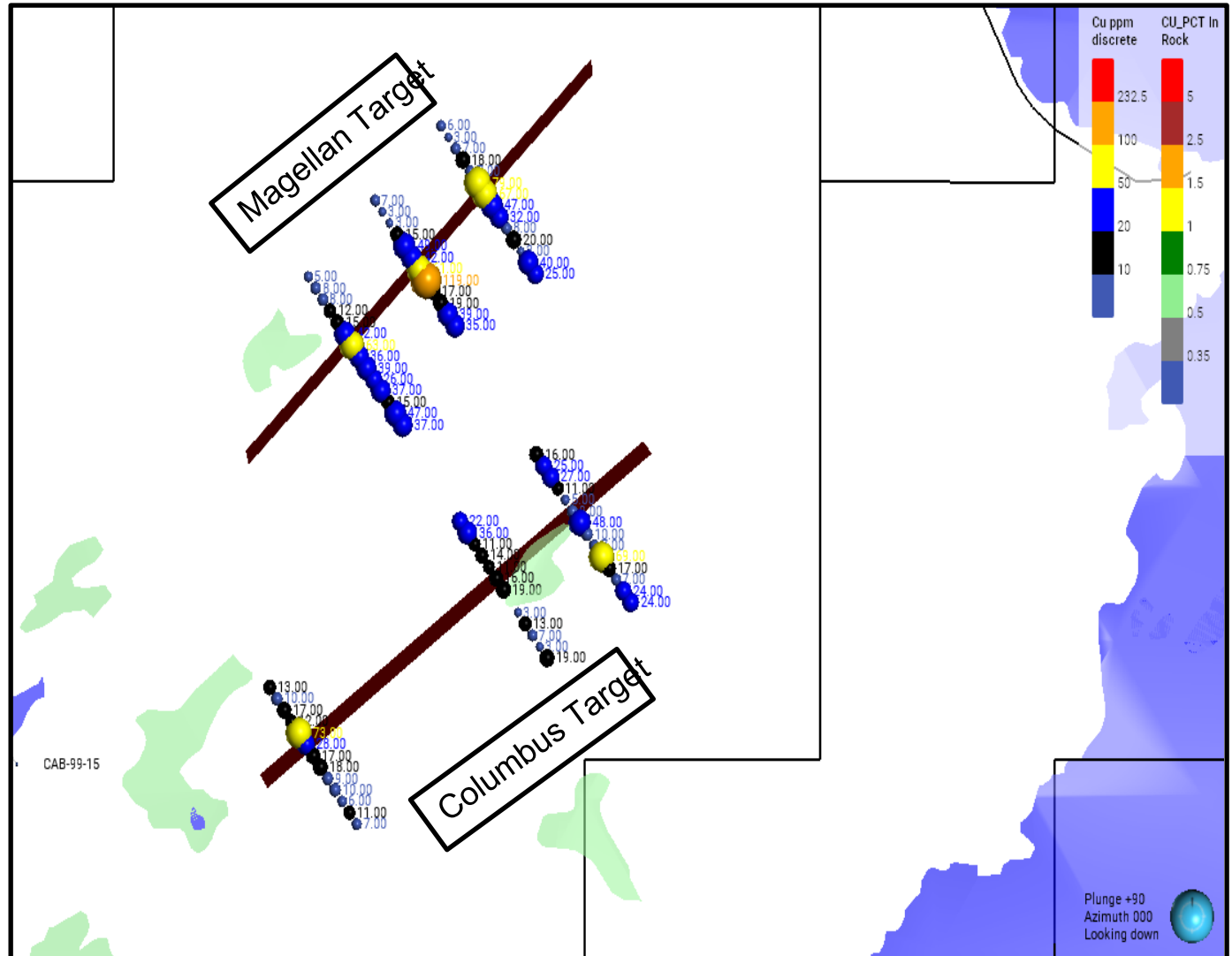
Figure 8: Map showing the locations of the modeled plates as magenta lines over an image of the VTEM channel 20 data. Plate 3 is the known mineralization at Cabot.

Thin plates	X	Y	RL	Dip	Dip Direction	Plunge	Strike length	Depth extent	Conductance (S)	Comments
Cabot Plate 1	562080	5544375	155	85	137	-3	1000	240	60	Target east of known mineralization in similar stratigraphic position
Cabot Plate 2	562170	5543740	155	82	325	0.3	1000	200	50	Target east of known mineralization
Cabot Plate 3	560500	5542905	155	69	124	-1	360	100	55	Known mineralization
Cabot Plate 4	559790	5541460	178	73	134	-1.9	970	258	52	Target north of the large anomaly caused by graphitic schist
Cabot Plate 5	561210	5541610	117	72	335	7.2	500	236	66	Target adjacent to large anomaly caused by graphitic schist

Northern Plates Validated by Targeted Soil Geochemistry



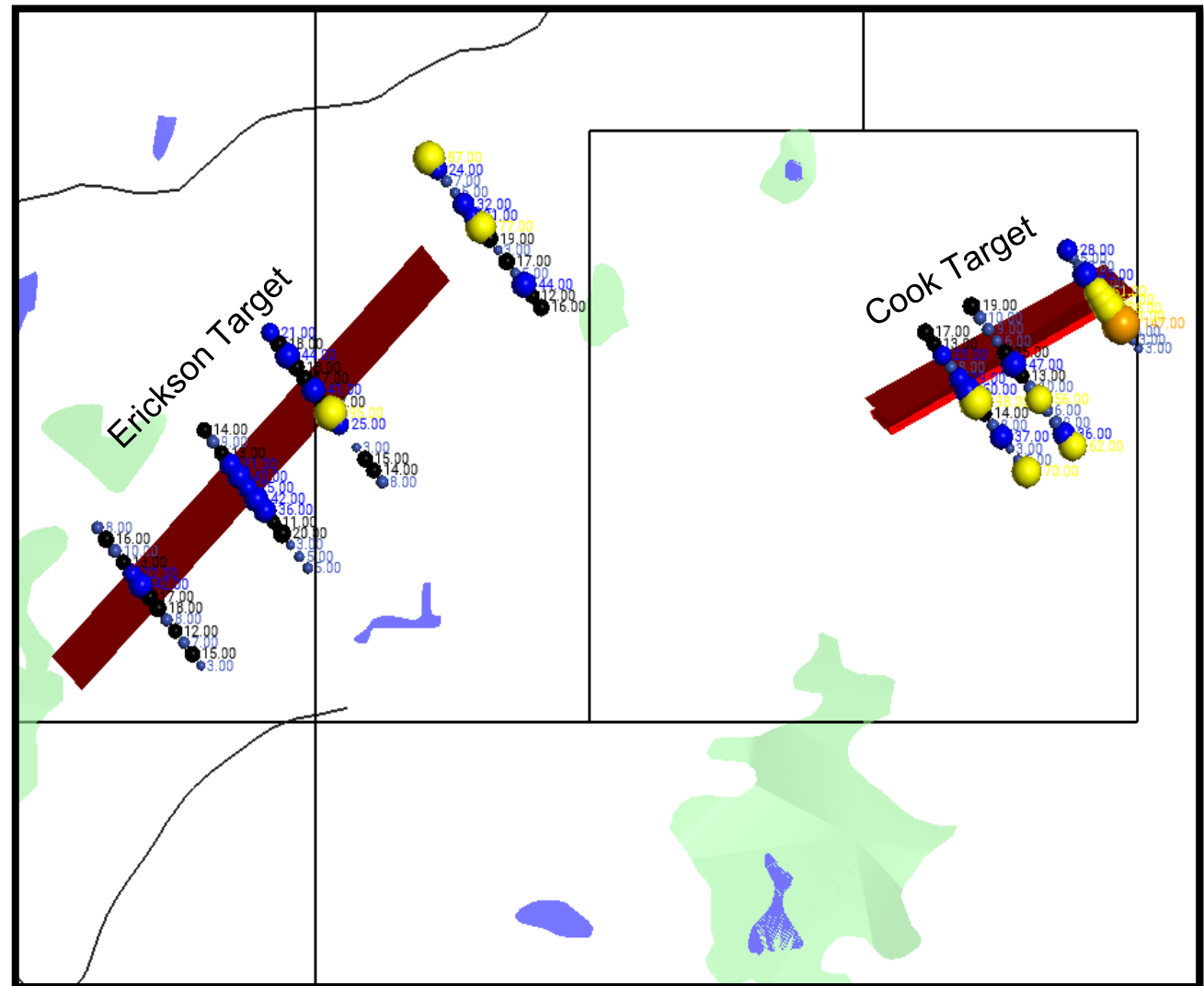
- Both plate/targets associated with anomalous Cu in soil geochemistry at or near plate.
- Magellan Plate/Target located 1.5km Northeast of Cabot Prospect along same Magnetic Trend.



Southern Plate Models with Coincident Cu in Soil Anomalies



- Both plate/targets associated with anomalous Cu in soil geochemistry at or near plate.
- Plate 5 or Cook Target Associated with both a Thick and Thin Electromagnetic Plate and highest-grade Cu in Soil anomalies outside of the known Copper Prospect.
- Initially Cook EM anomaly dismissed due to strong EM background associated with large graphitic horizon. Soil chemistry indicates this area requires further work.



Proposed Next Program

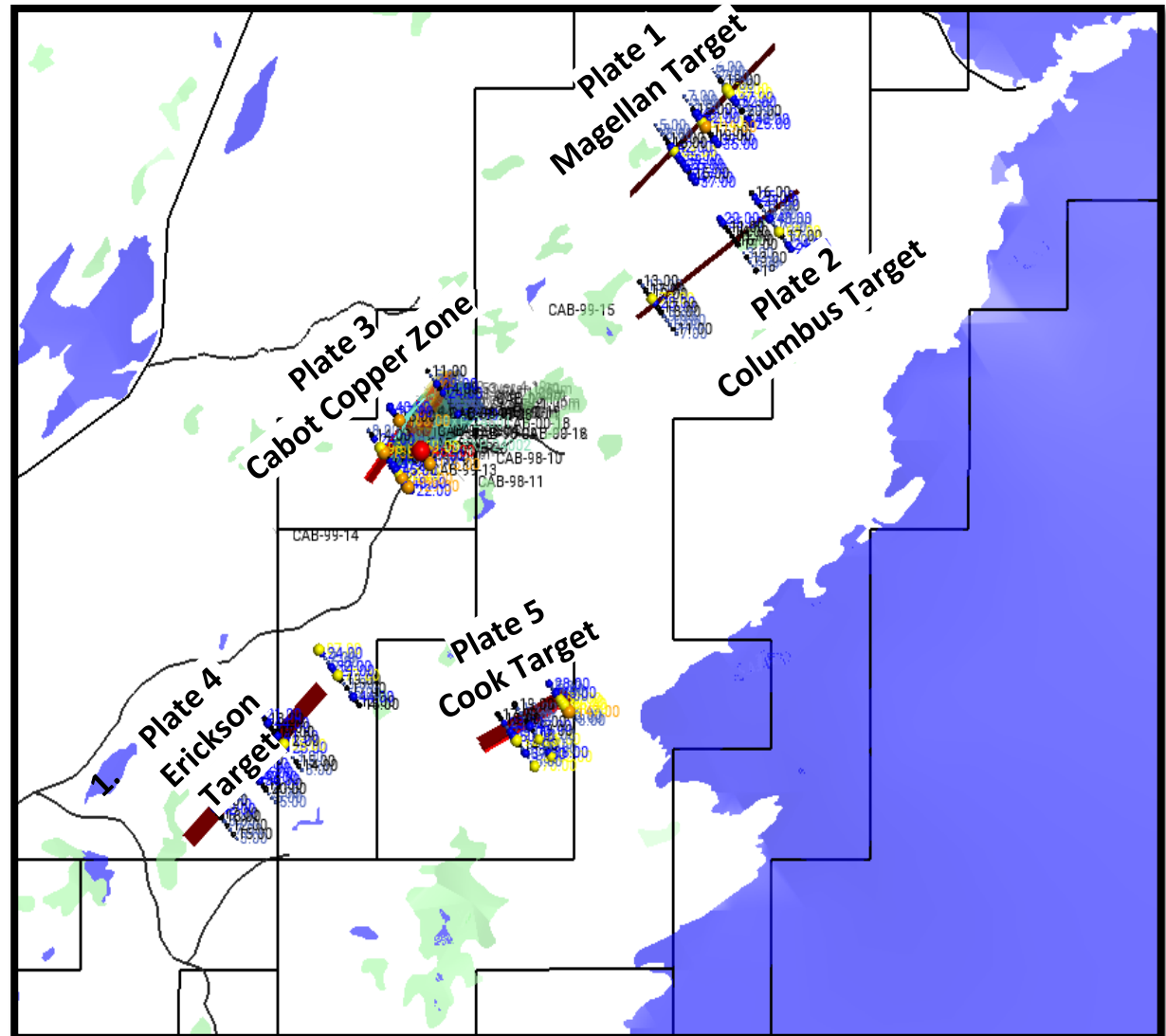


Targeted Grass Roots Exploration:

- Drill Testing and trenching the 4 untested EM Anomalies

Resource Definition:

- Systematic Channel Sampling at the Cabot Prospect
- Near surface Step out drilling to the north of the Cabot Copper Prospect for the development of a **phase 1 pit constrained resource shape.**



CENTENARIO GOLD CORP. Share Structure



	Number
Common shares, issued after first closing	16,228,254
Common shares, issued on second closing	<u>3,105,000</u>
Total shares Outstanding	<u>19,333,254</u>
Warrants Outstanding	
\$0.15 warrants expire February 2028	<u>750,000</u>
	750,000
Agents' Warrants Outstanding	
\$1.00 warrants expire August 16, 2026	40,000
	40,000
Options Outstanding	
\$1.00 options expire August 16, 2026	60,000
\$1.50 options expire October 26, 2028	<u>310,000</u>
	370,000
Common shares, fully diluted	<u><u>20,493,254</u></u>

Centenario's Corporate Structure

~ 4,100,000 shares Outstanding after 10 – 1 Consolidation at \$0.15
(approx. .35 million shares are escrowed for 1 years)

Proposed Financing

15,000,000 shares at \$0.10 to raise \$1,500,000

Market Capitalization after Consolidation and Financing at Market Price of \$0.30

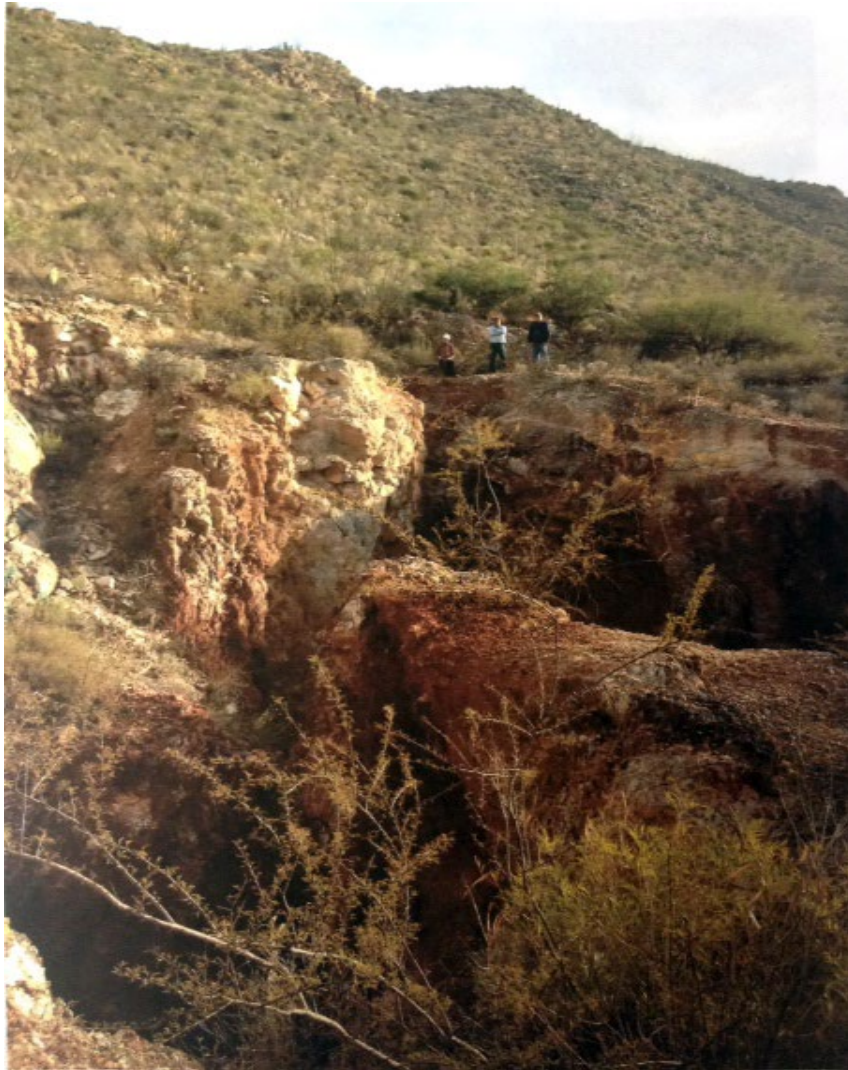
Approximately 19,333,000 shares @ \$0.30 = **\$5,799,900**

Management Team & Board



<p>Douglas Fulcher, CEO, President & Director Audit Committee</p>	<p>Doug has over 45 years experience in mining exploration and project management, he also has over twenty years experience as President, CEO of publicly trading junior resource companies such as Abacus Mining's – Ajax deposit and Maritime Resources – Hammerdown deposit.</p>
<p>Alain Charest, Director VP Exploration</p>	<p>Alain is a geological engineer with more than 35 years in major and junior company exploration worldwide. He spent the past 27 year in Mexico exploring and developing mining operations. For more than 12 years Alain acted as VP Exploration for Francisco Gold Corp. and Chesapeake Gold Corp both companies operating in Mexico.</p>
<p>John Hamilton, CFO</p>	<p>Jonathan has more than 20 years of experience in the accounting field and corporate and regulatory operations. He has been involved and responsible for taking a number of companies through to listing on both the TSX Venture Exchange and the CSE.</p>
<p>Pablo Mendez Alvidrez, Director, Mexican Legal Counsel Audit Committee</p>	<p>Pablo Méndez joined legal firm Ec Rubio in October 2004 and became partner in March 2010. In 2007 he opened the Mining Area of the firm and has been its Director since. In 2017 he was appointed Managing Director of the Chihuahua office., From 2002 to 2004, he worked for the Ministry of Foreign Affairs at the Consulate of Mexico in Albuquerque, New Mexico, U.S.. His areas of expertise are civil, commercial and banking litigation, mining, international affairs, amparo and immigration.</p>
<p>Kevin Milledge, Director Audit Committee</p>	<p>Mr. Milledge has over 45 years' experience as a businessman and entrepreneur in the mineral exploration field. Mr. Milledge is president of Pamicon Developments Ltd which is a full-service geological consulting firm with global experience. He has held management and executive positions and has extensive experience in project planning, development, and budgeting. Kevin has served on the boards and committees of several public companies trading on both the TSX Venture Exchange and Canadian Securities Exchange.</p>
<p>Almendra Lechuga, Operations Manager</p>	<p>Almendra has over 20 years of experience in the mining/resource industries in Mexico acting as Operation Manager and has extensive experience in permitting, property negotiations and accounting with all aspects of the mining industry. She plays a critical role in our Mexican operations.</p>

Mexican Management Team



Alain R. Charest, CEO, Director

- 2005-2020, Consultant, VP of Exploration for Mexico, EVRIM RESOURCES INC.
- 2009-2020, President & VP of Exploration for Arcelia Gold Corp. (Canadian private company)
- 2000-2008, VP of Exploration for Chesapeake Gold Corp
- 1994-2000, exploration geologist and VP of Exploration for Francisco Gold Corp
- 1993-1994, geophysical consultant for Noranda Mining in Mexico
- 1987-1993, completed Geological Engineering studies at UBC (University of British Columbia)

Hermilo Mendoza Hernandez, Senior Exploration Geologist

- 1982-1996, Project Geologist for Fresnillo PLC & Penoles SA de CV.
- 1996-2010, Project Geologist for Francisco Gold Corp. where he was involved with El Sauzal mine in Mexico as well as the Marlin mine in Guatemala, two world class gold mines
- 2008-2014, Hermilo was VP Exp. for Arcelia Gold a company run by Alain Charest
- 2015 – 2022, Hermilo was the Senior Exploration Geologist for Agnico – Eagle, Mexico. He was involved in their major mining project El Barqueno in Jalisco, Mexico as well as Santa Gertrudis and La India in Sonora state, Mexico.
- September 2022, Hermilo started consulting for Centenario Gold Corp.

Almendra Lechuga, Operations Manager Mexico

- 2009-2020, Operations Manager for Arcelia Gold Corp. (Canadian private company)
- 2006-2009, completed Artificial Intelligence Studies at Concordia University, Montreal, QC
- 2004-2006, assistant to VP of Exploration for Chesapeake Gold Corp
- 1999-2003, completed Systems Engineering studies at Tecnología de Chihuahua

CENTENARIO GOLD CORP Contact Information



Doug Fulcher
President, Director
M: (604) 803-5901
dfulcher@centenariogold.com

Alain-Roch Charest
CEO, VP Exploration, Director

Andrew Lee
Corporate Development
M: (604) 720-2703
ys.andrew.lee@gmail.com

Centenario Gold Corp.

Suite 615 – 800 West Pender Street, Vancouver, BC, V6C 2V6
Office Phone: 604-803-5901



CENTENARIO
GOLD CORP